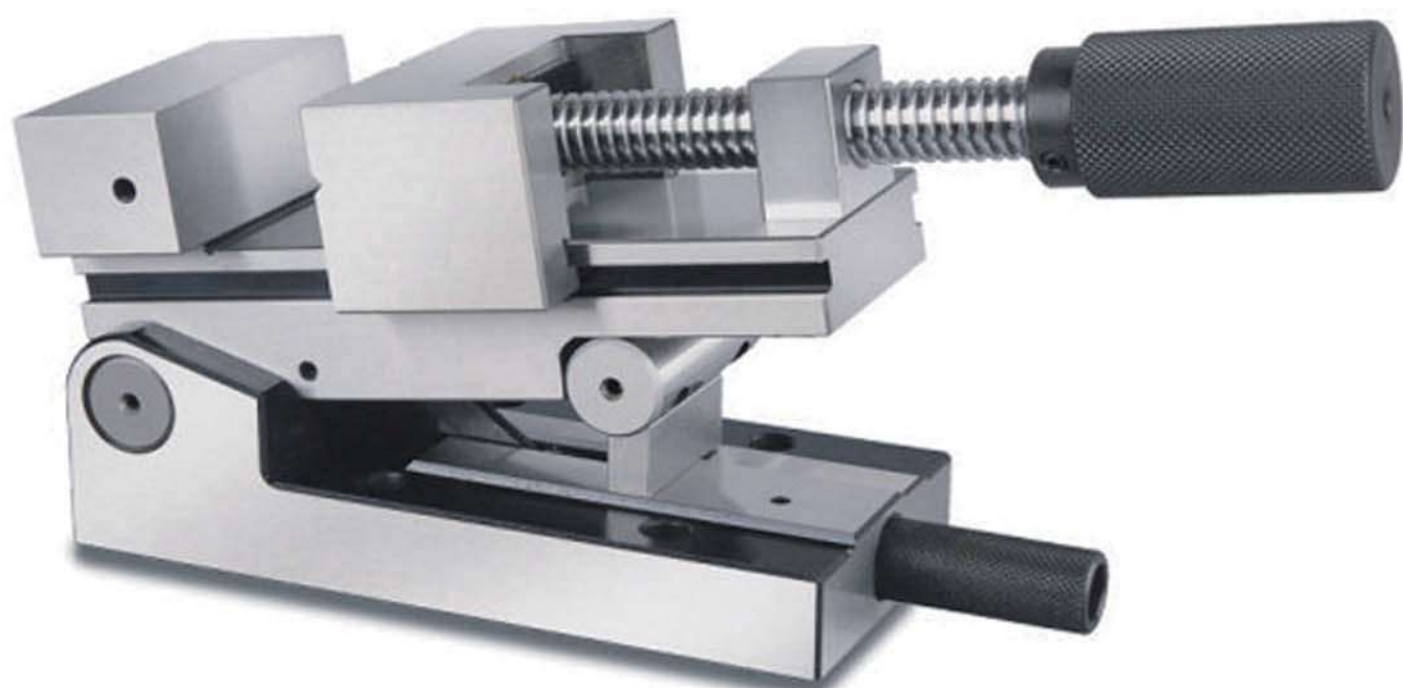


Tool Maker Vise

Grinding Accessories



B01-B48

B01~10
Tool Maker Vise (Stainless)


52700 B01



52715 B01



52720 B01



52725 B01



52730 B02



52735 B02



52740 B02



52745 B02



52750 B03



52755 B03



52760 B03



52765 B03



52770 B04



52775 B04



52780 B04



52790 B04



52800 B05



52820-60/70 B07



52820-90 B07



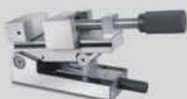
52830 B09



52840 B10



52850 B10

B11~16
Tool Maker Vise


52860 B11



52870 B11



52880 B12



52890 B12



52900 B13



52910 B13



52920 B14



52930 B14



52940 B15



52950 B15



52960 B16



52970 B16

INDEX

B17~26

Wire EDM Clamp (Stainless)



53000 B17



53005 B17



53010 B17



53015 B18



53020 B18



53025 B18



53030 B19



53035 B19



53040 B20



53045 B20



53050 B21



53055 B21



53060 B22



53065 B22



53068 B23



53070 B24



53100 B25



53105 B25



53110 B25



53112 B26



53115 B26



53120 B26

B27~36

Wire EDM Clamp (Stainless)



53125 B27



53130 B27



53135 B28



53140 B28



53145 B29



53148 B30



53150 B31



53155 B31



53160 B31



53165 B32



53168 B33



53170 B33



53175 B34



53180 B35



53185 B36

B37~48

EDM Fixture Clamp (Stainless)



53200 B37



53210 B37



53210-00 B39



53210-03/04/05 B40



53210-07/08 B41



53210-09/10 B42



53300 B43



53310 B43



53320 B43



53330 B44



53340 B44



53342 B45



53346 B45



53350 B46



53360 B46



53370 B46



53380 B46



53390 B47



53400 B47



53410 B47



53420 B47



53412 B48



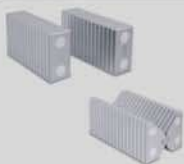
53422 B48

C01~13

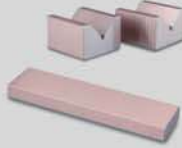
Induction Block / Sine Magnetic Chuck



54000 C01



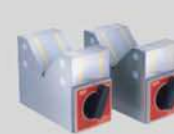
54010 C01



54020 C02



54030 C03



54040 C04



54050 C05



54058 C06



54060 C06



54065 C07



54070 C08



54080 C09



54090 C09



54100 C10



54110 C11



54120 C11



54130 C12



54140 C12



54150 C13

Stainless Tool Maker Vise

Material : SUS440

Parallelism: within 0.003mm/100mm

Hardness: HRC48°~55°

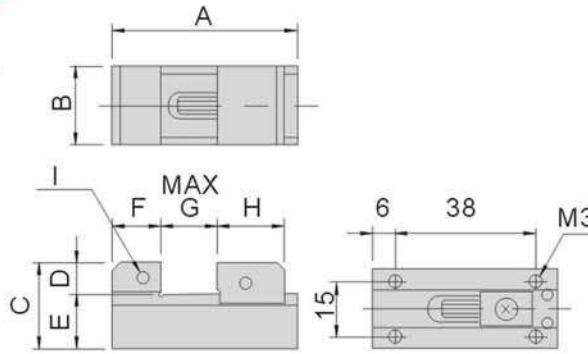
Squareness: within 0.003mm/100mm

Unit: mm

52700

VJ10

- A delicate vise and suitable for clamping precision workpiece

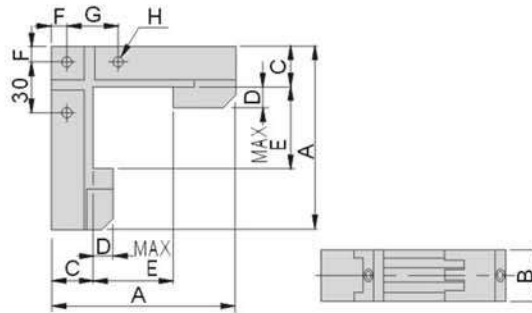


Spec.	VJ10
A	50
B	21
C	23.5
D	8.5
E	15
F	13
G	15
H	18
I	M3
N.W.	0.15kg

52715

VLW10

- Two way clamping and suitable for applying in EDM machine



Spec.	VLW10
A	90
B	25
C	20
D	12
E	40
F	7.5
G	25
H	M5
N.W.	0.5kg

52720

VL10

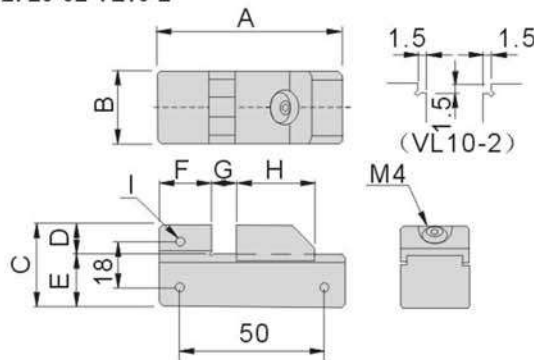
- Compact version precision vise, suitable for small precision workpiece, apply by wrench.
- VL10-2 has step groove on jaws.



VL10-1

VL10-2

52720-01 VL10-1
52720-02 VL10-2



Spec.	VL10-1	VL10-2
A	65	65
B	25	25
C	32	32
D	12	12
E	20	20
F	20	20
G	20	20
H	25	25
I	M4	M4
N.W.	0.25kg	0.25kg

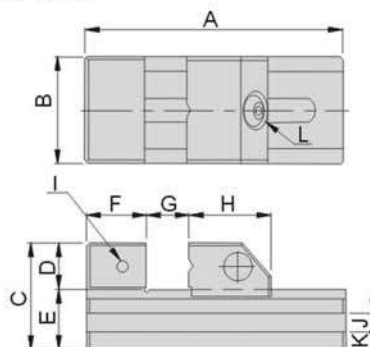
52725

VL20/30

- Suitable for high precision processing grinding / milling / EDM... apply by wrench to lock tight.



52725-20 VL20
52725-30 VL30



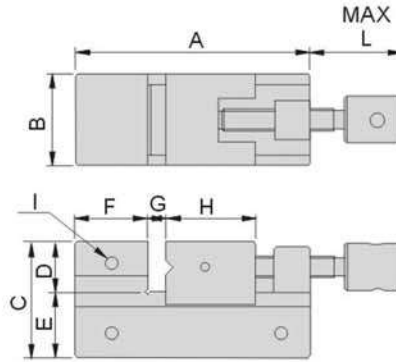
Spec.	VL20	VL30
A	140	180
B	50	72
C	53	62
D	25	30
E	28	32
F	25	35
G	0~75	0~100
H	40	45
I	M6	M6
J(WxD)	6x5	8x7
K	8.5	9
N.W.	1.5kg	3.0kg

Material :SUS440 Parallelism:within 0.003mm/100mm
 Hardness:HRC48°~55° Squareness:within 0.003mm/100mm

Unit:mm

52730 VSU10

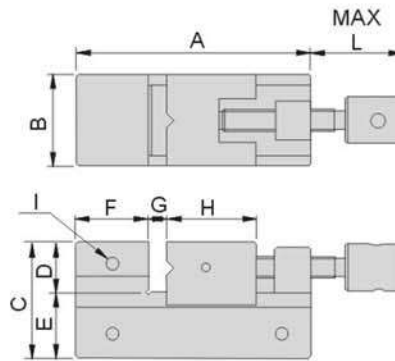
▶ Screw rod design to lock tight, suitable for clamping small workpiece.



Spec.	VSU10
A	70
B	25
C	32
D	14
E	18
F	20
G	0~25
H	25
I	M4
L	43
N.W.	0.5kg

52735 VSU15

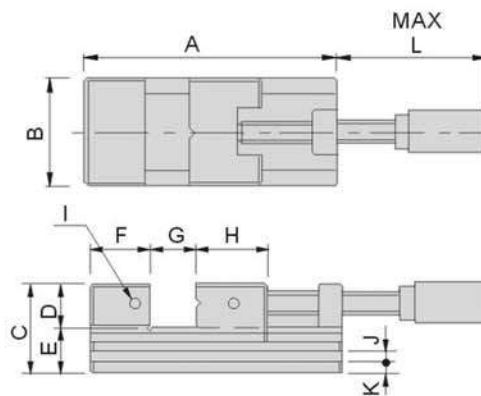
▶ Screw rod design to lock tight, suitable for clamping small workpiece.



Spec.	VSU15
A	100
B	36
C	35
D	16.5
E	18.5
F	20
G	0~50
H	30
I	M5
L	76.5
N.W.	1.0kg

52740 VSU30

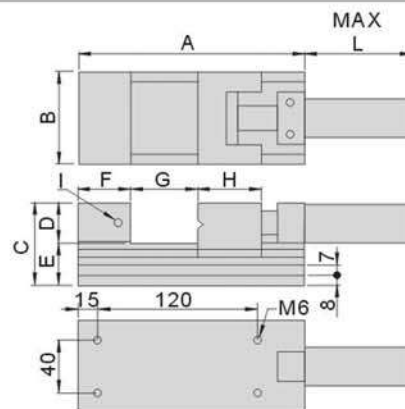
▶ Screw rod design to lock tight, suitable for clamping small workpiece to precision processing / grinding.



Spec.	VSU30
A	180
B	70
C	69
D	30
E	39
F	35
G	0~100
H	45
I	M6
J(WxD)	8x8
K	8
L	165.5
N.W.	4.2kg

52745 DSU80

▶ Compact structure, suitable for high precision processing work.



Spec.	DSU80
A	170
B	70
C	62
D	30
E	32
F	40
G	0~80
H	45
I	M6
L	82
N.W.	4.2kg

Stainless Tool Maker Vise

Material : SUS440

Parallelism: within 0.003mm/100mm

Hardness: HRC48°~55°

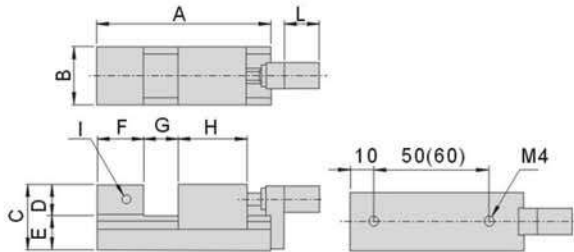
Squareness: within 0.003mm/100mm

Unit:mm

52750 DSU20/30

52750-20 DSU20
52750-30 DSU30

- ▶ Screw rod design to lock tight, suitable for clamping small precision workpiece.

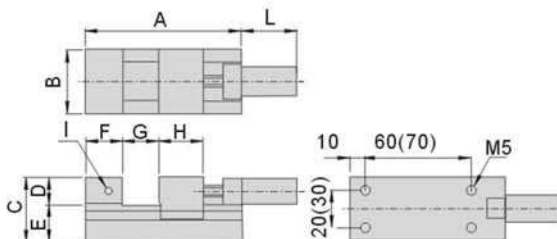


Spec.	DSU20	DSU30
A	75	95
B	25	30
C	28	35
D	13	15
E	15	20
F	20	20
G	0~20	0~30
H	30	40
I	M4	M4
L	20	20
N.W.	0.27kg	0.65kg

52755 DSU40/50

52755-40 DSU40
52755-50 DSU50

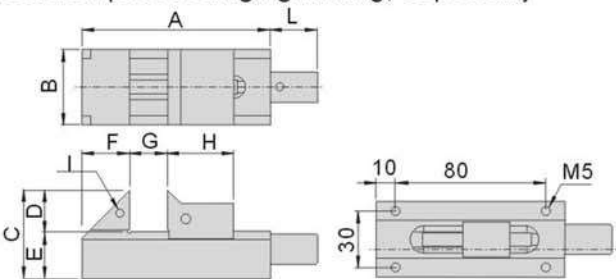
- ▶ Screw rod design to lock tight, suitable for clamping small precision workpiece.



Spec.	DSU40	DSU50
A	95	110
B	35	45
C	35	45
D	15	20
E	20	25
F	20	25
G	0~40	0~50
H	24	24
I	M5	M5
L	45	50
N.W.	0.9kg	1.6kg

52760 PMV30

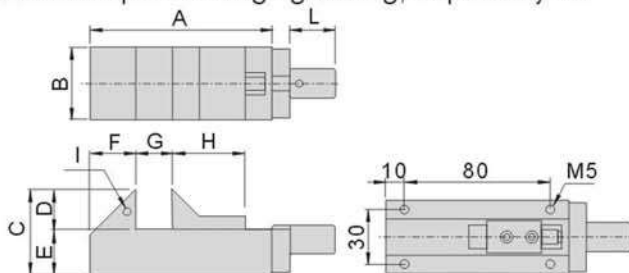
- ▶ Screw rod design to lock tight and has compact structure, suitable for clamping small workpiece to precision processing / grinding, especially on 5-axis machine center.



Spec.	PMV30
A	100
B	40
C	47
D	22
E	25
F	25
G	30
H	35
I	M4
L	31.5
N.W.	0.90kg

52765 PMV30F

- ▶ Screw rod design to lock tight and has compact structure, suitable for clamping small workpiece to precision processing / grinding, especially on 5-axis machine center.



Spec.	PMV30F
A	100
B	40
C	47
D	22
E	25
F	25
G	30
H	40
I	M4
L	30
N.W.	0.93kg

Material :SUS440 Parallelism:within 0.003mm/100mm
 Hardness:HRC48°~55° Squareness:within 0.003mm/100mm

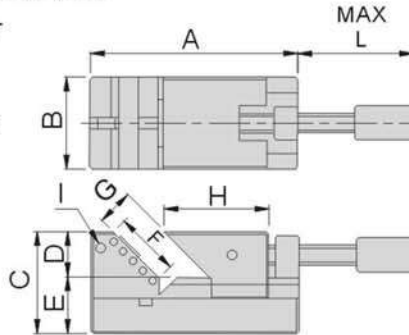
Unit:mm

52770

VE30/50

52770-30 VE30
52770-50 VE50

- 45° angle design for the jaw, suitable for precision and small workpiece which needs to form 45° angle.
- Standard equipment for adjusting work height position.

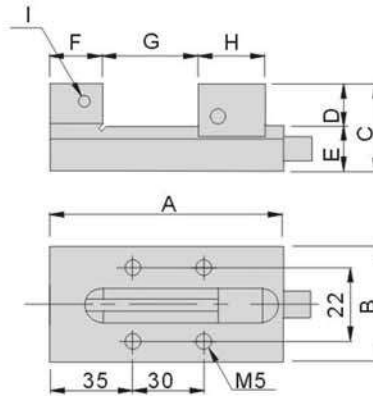


Spec.	VE30	VE50
A	62	90
B	30	50
C	37	44
D	15	20
E	22	24
F	21	33.9
G	0~11	26
H	37.5	45.4
I	M4	M4
L	33.5	65
N.W.	0.5kg	0.7kg

52775

VR40

- This vise has compact structure vise with special design to prevent any floating of workpiece when clamped.

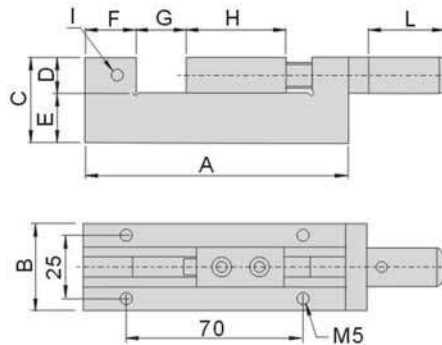


Spec.	VR40
A	100
B	40
C	40
D	15
E	25
F	25
G	0~40
H	25
I	M4
N.W.	1.0kg

52780

VK35

- This vise is adopting new structure and easier operation with higher accuracy and stability.

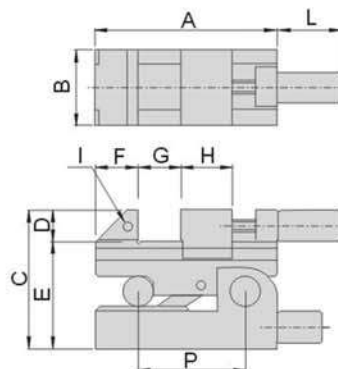


Spec.	VK35
A	105
B	35
C	35
D	15
E	20
F	20
G	0~30
H	40
I	M4
L	30
N.W.	1.1kg

52790

VSP50

- Precision sine vise, suitable for precision and small workpiece as well as EDM work.



Spec.	VSP50
A	85
B	35
C	65
D	15
E	50
F	20
G	0~30
H	24
I	M4
L	37
P	50
N.W.	1.0kg



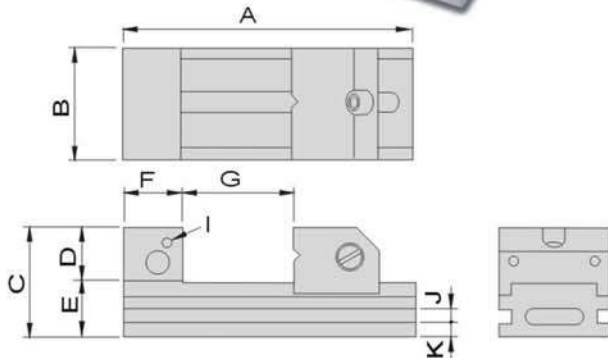
TOOL MAKER VISE

Tool Maker Vise

52800

VV

Ultra Precision Tool Maker Vise



Features :

- ▲ VV Tool Maker Vise is made of high quality alloy tool steel (SKS)
- ▲ Special design to prevent distortion during clamping ensuring the accuracy for work processing on workpieces.
- ▲ With quick adjust spring function, clamping jaw can move and position easily.

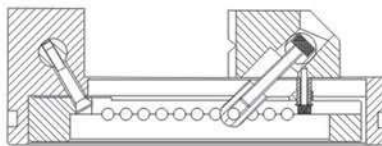
Material	SKS
Hardness	HRC58°~60°
Sub-zero treatment	-185°C
Parallelism	within 0.003mm/100mm
Squareness	within 0.004mm/100mm

Unit:mm

Order No.	Model	A	B	C	D	E	F	G	I	J	K	N.W.
52800-20	VV20	150	48	53	25	28	25	0-70	M5	6	8.5	1.7kg
52800-30	VV30	190	73	70	35	35	38	0-100	M6	8	9.5	4.5kg
52800-40	VV40	230	98	80	40	40	46	0-125	M6	10	10	8.4kg
52800-50	VV50	300	125	98	48	50	60	0-160	M8	12	13	17.4kg
52800-60	VV60	350	150	100	50	50	60	0-210	M8	12	13	22.7kg

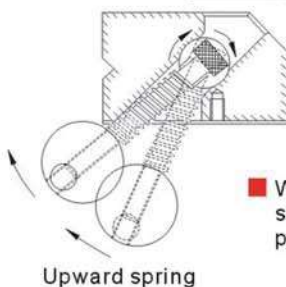
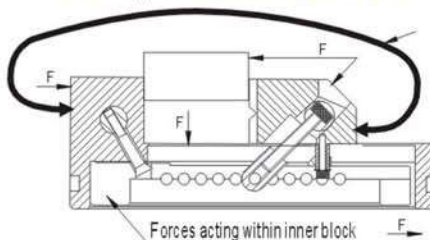
Super Precision Tool Maker Vise

- New improved VV Tool Maker Vise before clamping operation.



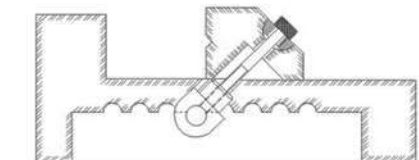
- Improved VV Tool Maker Vise, inner block face force when clamping and no twist or distortion is existing and achieve higher accuracy and stability.

Principle of anti-distortion

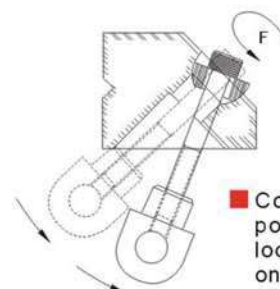
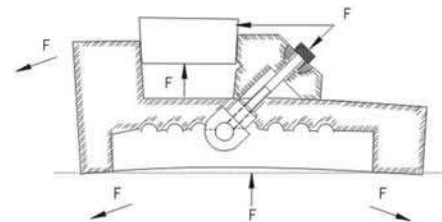


- When the fixed pin face the pressure from the spring, it generates upward twisting torque and push the screw match with the inner block.

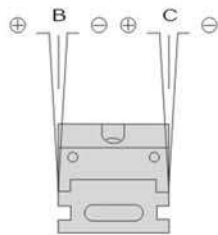
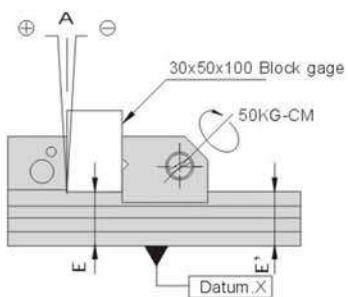
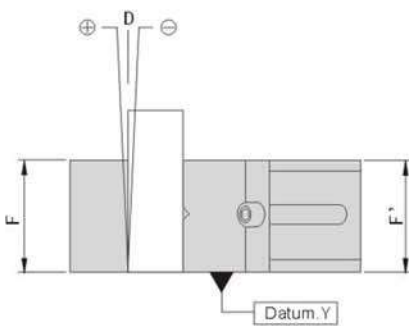
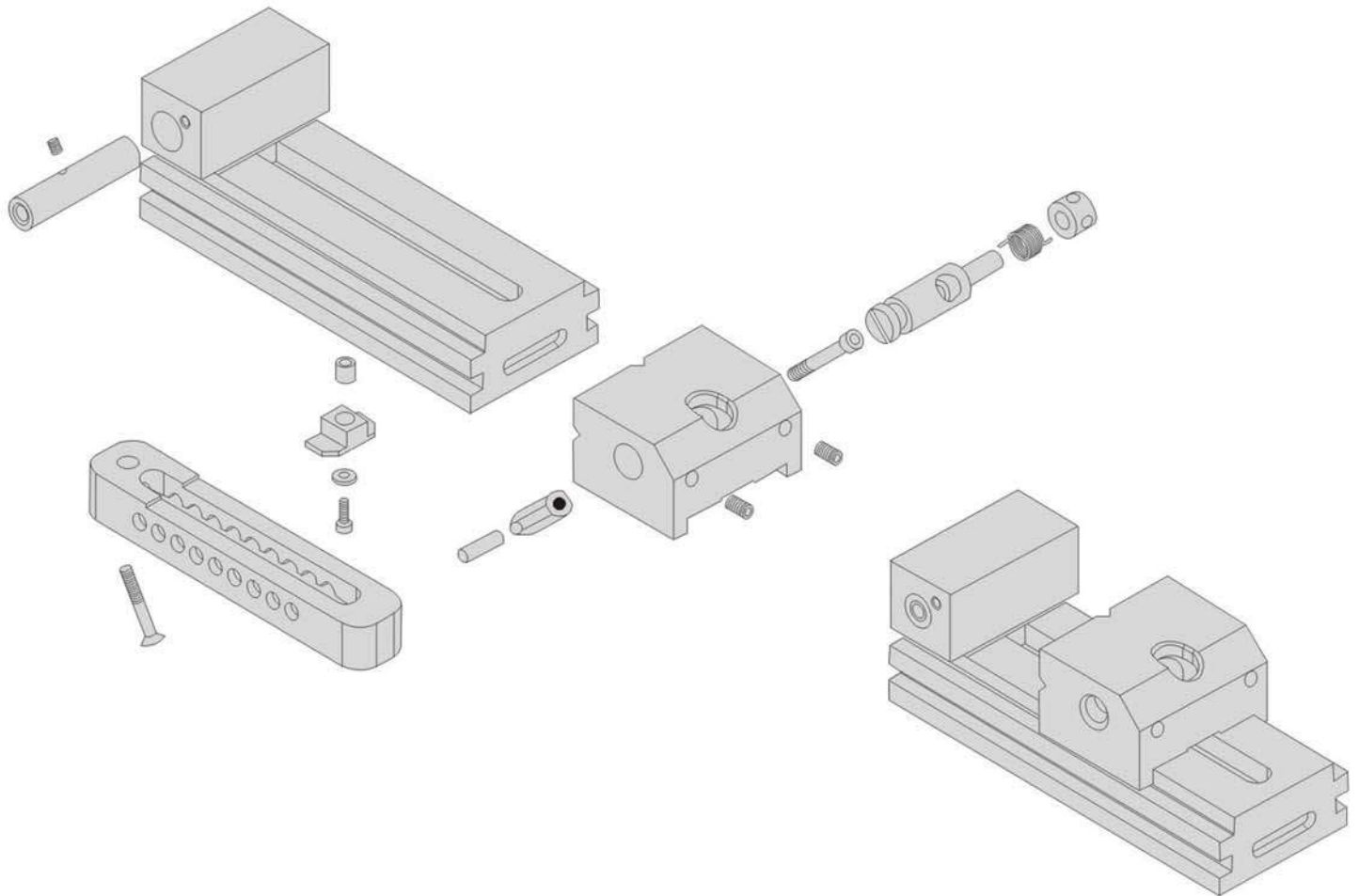
Upward spring



- Conventional vise has distortion or twist when clamping workpiece and thus lead to poor accuracy.



- Conventional vise needs to position the fix pin when you loose the screw, it all depends on manual work.



		Unit:µm
Position	Inspection description	Tolerance
A	Perpendicularity to Datum X	±4
B	Perpendicularity to Datum X	±4
C	Perpendicularity to Datum X	±4
D	Perpendicularity to Datum Y	±4
E	Perpendicularity to Datum X	±3
F	Perpendicularity to Datum Y	±3

Tool Maker Vise

52820

HU

Tool Maker Vise



HU60



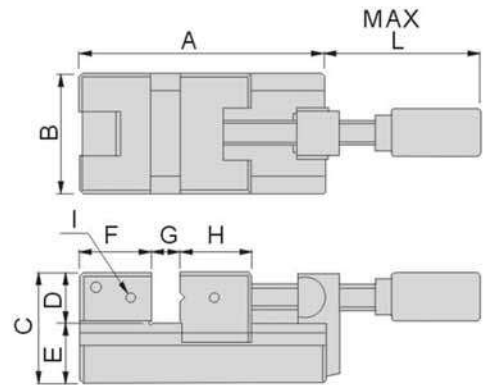
HU70



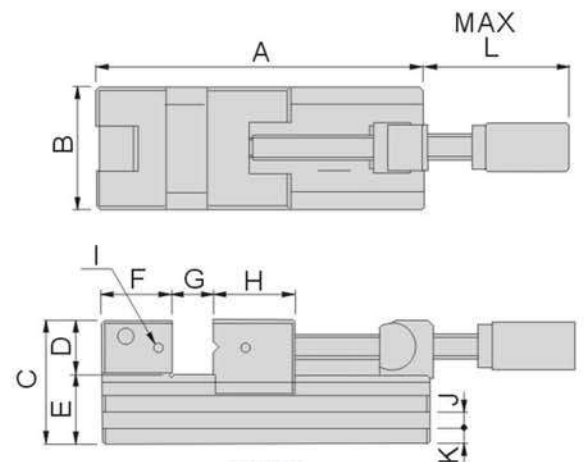
HU90

Features :

- ▶ Made of high quality alloy tool steel (SKS3) and tempering & sub-zero treatment.
- ▶ Anti-distortion design with screw rod function to lock, suitable for applying on precision processing work.



HU60/70



HU90

Material	SKS
Hardness	HRC56°~60°
Parallelism	within 0.003mm/100mm
Squareness	within 0.005mm/100mm

Order No.	Model	A	B	C	D	E	F	G	H	I	L	N.W.
52820-60	HU60	122	60	60	25	35	35	0~47	40	M6	105	2.5kg
52820-70	HU70	172	70	70	30	40	40	0~80	45	M6	149.5	4.7kg

Unit:mm

Order No.	Model	A	B	C	D	E	F	G	H	I	J(WxD)	K	L	N.W.
52820-90	HU90	237	90	90	40	50	50	0~125	50	M6	10x7	10	201	10.3kg

Unit:mm

TOOL MAKER VISE

Anti-distortion

Adopting built-in Anti-distortion structure

Comparison



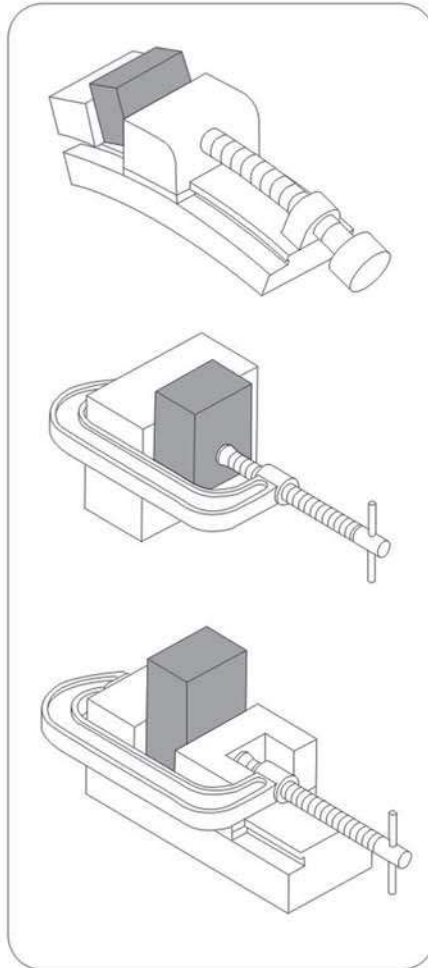
HU60



HU70



HU90



General Tool Maker Vise will distort from clamping stress and thus impede the precision processing.

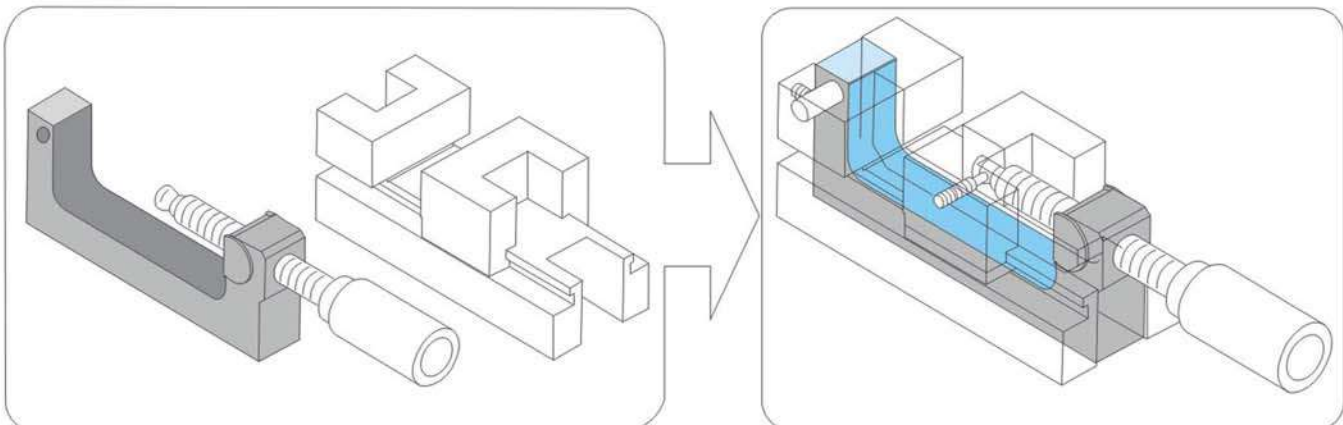
Applying fixture block is essential for high precision processing, however, it is not cost effective.

Applying fixture block and the vise it achieve cost effective and high precision processing.



TOOL MAKER VISE

Making inbuilt fixture into vise and it help the precision processing due to the distortion stress will react on fixture. Thus no distortion influent the parallelism and perpendicularity.



Tool Maker Vise

52830

SV

Super Precision Tool Maker Vise

SV34



SV45/70/90/120

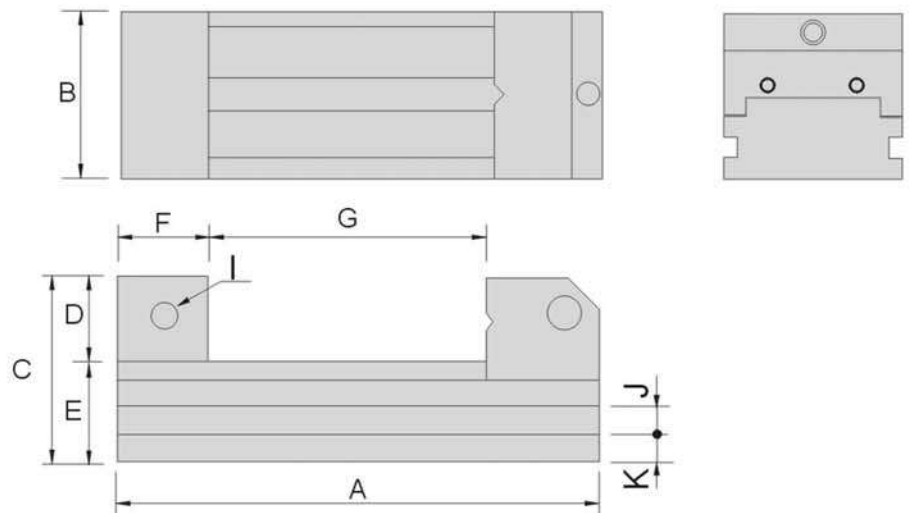
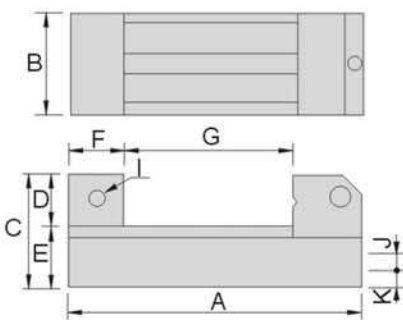


Features :

- ▶ Made of high quality alloy tool steel (SKS3) with Sub-zero treatment.
- ▶ The best type of Tool Maker Vise both in structure and accuracy.
- ▶ Due its high precision and stability, it is well-known in Japan and Europe and sold to worldwide range.
- ▶ Single side oblique angle design can automatically mend the distortion from the body.

Material	SKS
Hardness	HRC58°~60°
Sub-zero treatment	-185°C
Parallelism	within 0.003mm/100mm
Squareness	within 0.004mm/100mm

SV34



Unit:mm

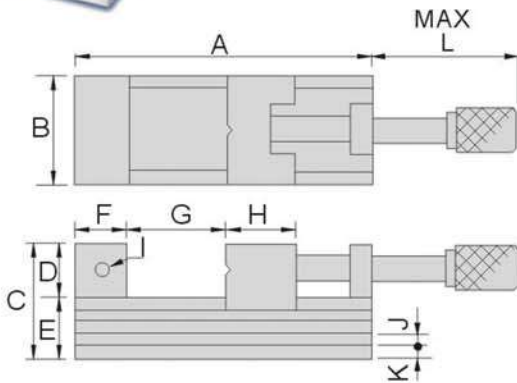
Order No.	Model	A	B	C	D	E	F	G	I	J	K	N.W.
52830-34	SV34	75	34	35	15	20	20	0-25	M4	-	-	0.5kg
52830-45	SV45	110	45	45	20	25	25	0-50	M5	6	8	1.0kg
52830-70	SV70	160	70	62	30	32	33	0-80	M6	8	9	3.0kg
52830-90	SV90	210	90	80	40	40	40	0-115	M6	10	12	6.7kg
52830-120	SV120	286	120	90	40	50	60	0-150	M6	12	14	14.9kg

52840

A

Super Precision Tool Maker Vise

A20



Features :

- ▶ A type Super Precision Tool Maker Vise has complete specifications with handle screw bar design. Hex wrench can be applied for lock tighter.
- ▶ Precision screw bar and screw nut, ensure the lasting durability, every part is precision ground square and parallel.
- ▶ New one-way bevel design that automatically corrects the amount of deformation of the body.

Material	SK2
Hardness	HRC56°~58°
Parallelism	within 0.003mm/100mm
Squareness	within 0.004mm/100mm

Unit:mm

Order No.	Model	A	B	C	D	E	F	G	H	I	J	K	L	N.W.
52840-20	A20	140	48	55	25	30	25	0-75	40	M6	-	-	117	2.3kg
52840-25	A25	160	63	69	30	39	30	0-85	45	M6	8	9	129	3.8kg
52840-30	A30	180	73	78	35	43	35	0-95	50	M6	8	10	132	6.0kg
52840-40	A40	230	98	92	45	47	45	0-120	50	M8	10	11	172	11.3kg

52850

AS

Ultra Precision Tool Maker Vise

AS60

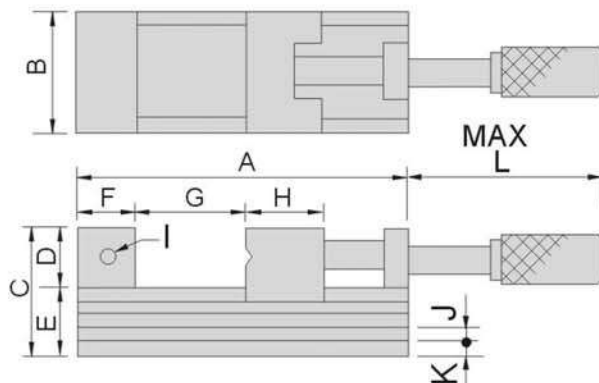


AS70



Features :

- ▶ New one-way bevel design that automatically corrects the amount of deformation of the body.



Unit:mm

Material	SKS
Hardness	HRC58°~60°
Sub-zero treatment	-185°C
Parallelism	within 0.002mm/100mm
Squareness	within 0.003mm/100mm

Order No.	Model	A	B	C	D	E	F	G	H	I	J	K	L	N.W.
52850-60	AS60	92	60	50	25	25	25	0-32	30	M5	6	4.5	60	1.6kg
52850-70	AS70	165	70	62	30	32	33	0-80	45	M6	7	8	140	4.0kg
52850-90	AS90	212	90	80	40	40	40	0-120	50	M6	9	9	192	8.4kg

Tool Maker Vice

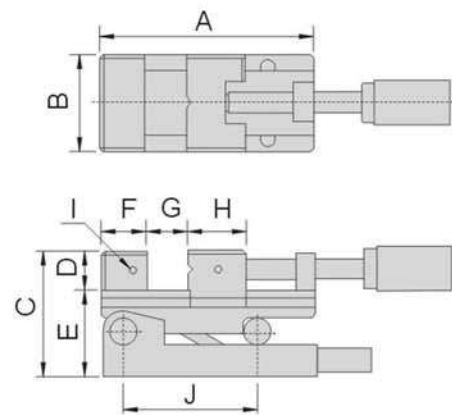
52860 V100 Precision Sine Vice



Features :

- ▶ Suitably using in grinding, cutting, drilling, marking and measuring.
- ▶ New structure design make easier operation with higher accuracy and stability.
- ▶ Optional block gauge for sine angle calculation see order no. 55070

Material	SKS
Hardness	HRC58°~60°
Sub-zero treatment	-185°C
Parallelism	within 0.003mm/100mm
Squareness	within 0.005mm/100mm
Max. angle & tolerance	46°±15"



Spec	V100
A	160
B	73
C	93
D	30
E	63
F	33
G	80
H	45
I	M5
J	100
N.W	5.6kg

TOOL MAKER VISE

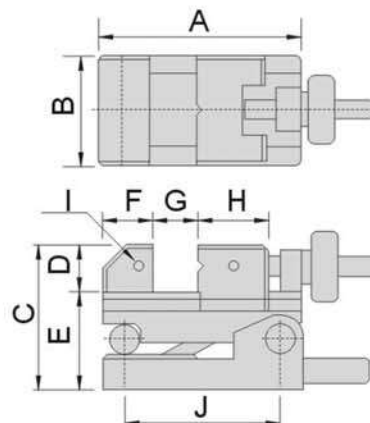
52870 VC100 Precision Sine Vice



Features :

- ▶ Suitably using in grinding, cutting, drilling, marking and measuring.
- ▶ New structure design make easier operation with higher accuracy and stability.
- ▶ Optional block gauge for sine angle calculation see order no. 55070

Material	SKS
Hardness	HRC58°~60°
Sub-zero treatment	-185°C
Parallelism	within 0.003mm/100mm
Squareness	within 0.005mm/100mm
Max. angle & tolerance	46°±15"



Spec	VC100
A	130
B	73
C	93
D	30
E	63
F	33
G	45
H	45
I	M5
J	100
N.W	4.6kg

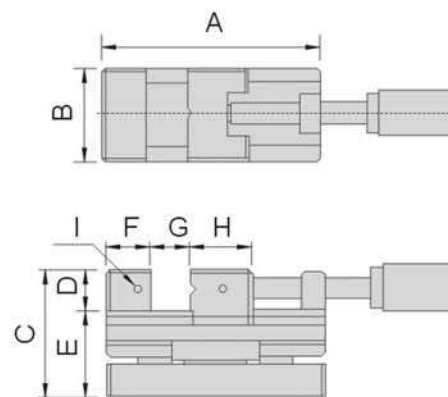
52880 L50 Precision Sine Vise



Features :

- ▶ Suitably using in grinding, cutting, drilling, marking and measuring.
- ▶ New structure design make easier operation with higher accuracy and stability.
- ▶ The quotient is equal to the sine of the resulting angle, which can be found in a trigonometric table or by using a scientific calculator.
- ▶ Optional block gauge for sine angle calculation see order no. 55070

Material	SKS
Hardness	HRC58°~60°
Sub-zero treatment	-185°C
Parallelism	within 0.003mm/100mm
Squareness	within 0.005mm/100mm
Max. angle & tolerance	46°±15"



Spec	L50
A	160
B	73
C	93
D	30
E	63
F	33
G	80
H	45
I	M5
N.W	5.8kg

TOOL MAKER VISE

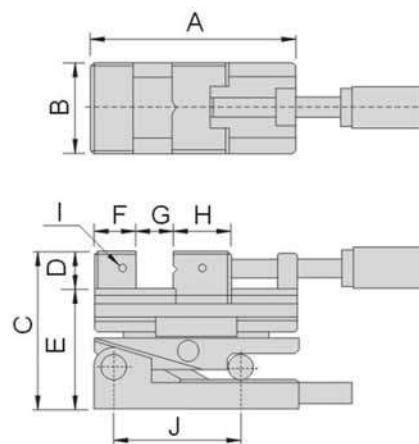
52890 CSV100 Precision Compound Sine Vise



Features :

- ▶ Suitably using in grinding, cutting, drilling, marking and measuring.
- ▶ New structure design make easier operation with higher accuracy and stability.
- ▶ The quotient is equal to the sine of the resulting angle, which can be found in a trigonometric table or by using a scientific calculator.
- ▶ Optional block gauge for sine angle calculation see order no. 55070

Material	SKS
Hardness	HRC58°~60°
Sub-zero treatment	-185°C
Parallelism	within 0.003mm/100mm
Squareness	within 0.005mm/100mm
Max. angle & tolerance	46°±15"



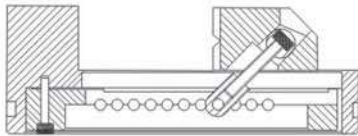
Spec	CSV100
A	160
B	73
C	124
D	30
E	94
F	33
G	80
H	45
I	M5
J	100
N.W	7.5kg

Tool Maker Vise

52900

VS

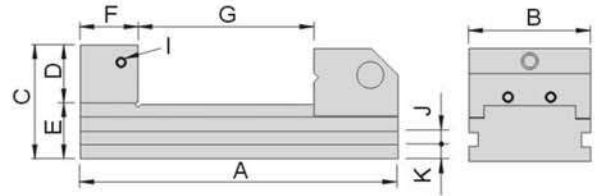
Tool Maker Vise



Anti-distortion new design except for VSB15

Features :

- ▶ New structure design make easier operation with higher accuracy and stability.



Material	SK2
Hardness	HRC55°~60°
Parallelism	within 0.003mm/100mm
Squareness	within 0.005mm/100mm

Unit:mm

Order No.	Model	A	B	C	D	E	F	G	I	J	K	N.W.
52900-15	VSB15	105	36	48	20	28	25	0-40	M6	7	9	0.8kg
52900-20	VSB20	150	48	53	25	28	25	0-75	M6	6	8.5	1.5kg
52900-25	VSB25	176	63	59	30	29	30	0-95	M6	8	7.5	2.6kg
52900-30	VSB30	190	73	68	35	33	35	0-105	M6	8	9	4.0kg
52900-40	VSB40	245	98	90	45	45	45	0-135	M6	10	14	9.5kg

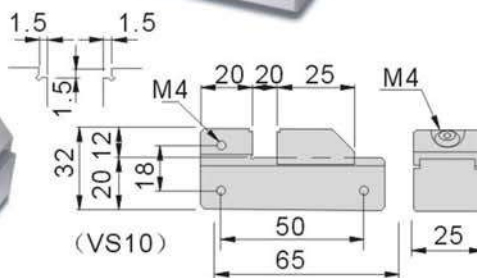
52910

VS

Tool Maker Vise

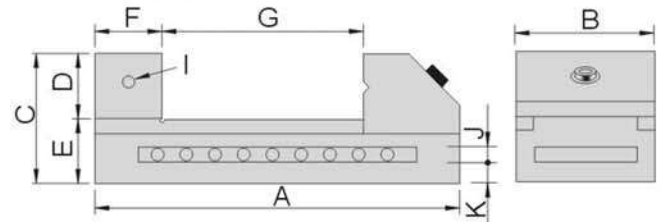


52910-10
VS10



Features :

- ▶ Precision Tool Maker Vises are suitable for all machining operations.



Material	SK2
Hardness	HRC55°~60°
Parallelism	within 0.003mm/100mm
Squareness	within 0.005mm/100mm

Unit:mm

Order No.	Model	A	B	C	D	E	F	G	I	J	K	N.W.
52910-15	VS15	105	36	48	20	28	25	0-40	M6	7	9	0.9kg
52910-20	VS20	150	50	53	25	28	30	0-80	M6	8	8	1.6kg
52910-25	VS25	175	63	63	32	31	35	0-90	M6	10	11	2.9kg
52910-30	VS30	190	73	70	35	35	35	0-100	M6	10	12	4.3kg
52910-35	VS35	235	88	80	40	40	40	0-130	M8	12	14	6.8kg
52910-40	VS40	245	100	90	45	45	45	0-130	M8	12	16	10kg
52910-50	VS50	285	125	100	50	50	45	0-160	M8	14	18	15kg

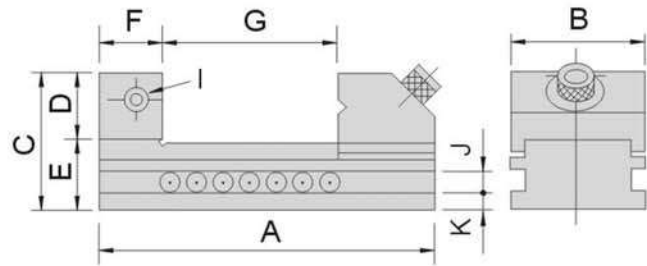
52920 VS **Tool Maker Vise (Big)**



Material	SK2
Hardness	HRC55°~60°
Parallelism	within 0.003mm/100mm
Squareness	within 0.005mm/100mm

Features :

- ▶ One piece body construction.
- ▶ Holes and locking set screw provide adjustable positions.



Unit:mm

Order No.	Model	A	B	C	D	E	F	G	I	J	K	N.W.
52920-60	VS60	330	150	100	50	50	50	0-180	M8	14	18	20kg
52920-80	VS80	360	200	110	55	55	55	0-205	M10	14	20.5	33kg

TOOL MAKER VISE

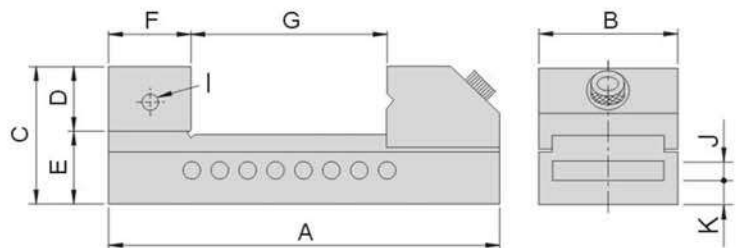
52930 VB **Tool Maker Vise**



Material	Tool Steel
Hardness	HRC52°~58°
Parallelism	within 0.005mm/100mm
Squareness	within 0.008mm/100mm

Features :

- ▶ One piece body construction.
- ▶ Holes and locking set screw provide adjustable positions.



Unit:mm

Order No.	Model	A	B	C	D	E	F	G	I	J	K	N.W.
52930-15	VB15	100	36	48	20	28	25	0-40	M5	8	8	1.0kg
52930-20	VB20	150	50	53	25	28	30	0-80	M6	8	8	1.7kg
52930-25	VB25	175	63	63	32	31	35	0-90	M6	10	11	3.0kg
52930-30	VB30	190	73	70	35	35	35	0-100	M6	10	12	4.2kg
52930-35	VB35	235	88	80	40	40	40	0-130	M8	12	14	7.0kg
52930-40	VB40	245	100	90	45	45	45	0-130	M8	12	16	9.0kg
52930-50	VB50	285	125	100	50	50	45	0-160	M8	14	18	15.0kg

Tool Maker Vise

52940

SVA

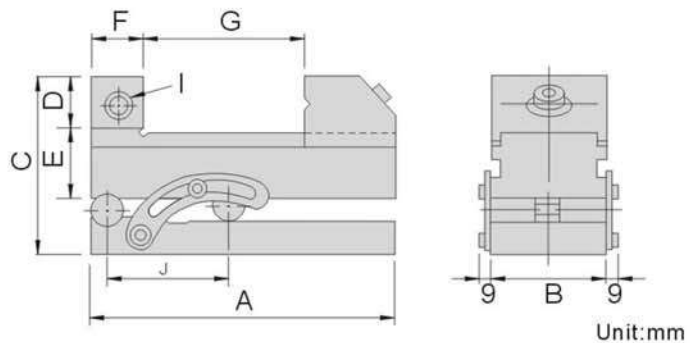
Tool Maker Sine Vise



Material	Tool Steel
Hardness	HRC52°~58°
Parallelism	within 0.005mm/100mm
Squareness	within 0.005mm/100mm

Features :

- Maximum angle of 46°.Tolerance ± 15 sec.
- Optional block gauge for sine angle calculation see order no. 55070



Order No.	Model	A	B	C	D	E	F	G	I	J	N.W.
52940-20	SVA20	150	48	88.5	25	28	25	0-75	M6	100	2.9kg
52940-25	SVA25	176	63	94.5	30	29	30	0-85	M6	100	4.6kg
52940-30	SVA30	190	73	103.5	35	33	35	0-95	M6	100	6.4kg
52940-40	SVA40	245	98	126.5	45	45	45	0-125	M6	150	14.1kg

52950

SV

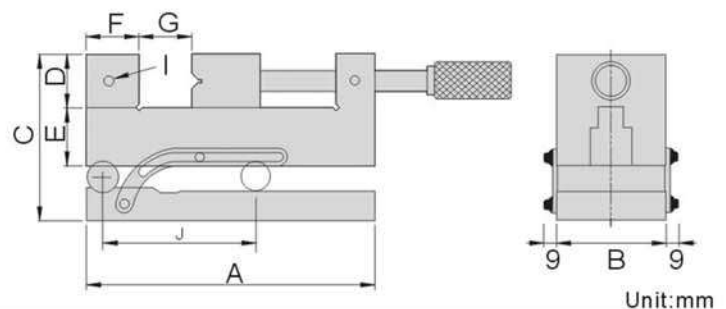
Tool Maker Sine Vise



Material	Tool Steel
Hardness	HRC52°~58°
Parallelism	within 0.005mm/100mm
Squareness	within 0.005mm/100mm

Features :

- Maximum angle of 46°.Tolerance ± 15 sec.
- Optional block gauge for sine angle calculation see order no. 55070



Order No.	Model	A	B	C	D	E	F	G	I	J	N.W.
52950-200	SV200	156	48	87.5	25	27	25	0-63	M6	100	3.7kg
52950-250	SV250	176	63	98.5	30	33	30	0-73	M6	100	6.0kg
52950-300	SV300	190	73	103.5	35	33	35	0-76	M6	100	8.0kg
52950-400	SV400	255	98	120.5	40	42	40	0-120	M8	150	16.0kg

52960

VSD

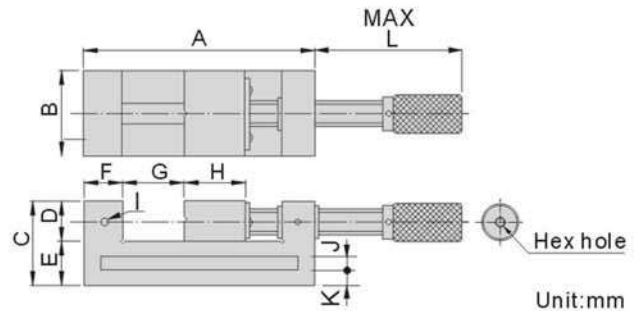
Tool Maker Vice



Material	Tool Steel
Hardness	HRC52°~58°
Parallelism	within 0.004mm/100mm
Squareness	within 0.006mm/100mm

Features :

- ▶ New structure design for minimum clearance occurred when lock tight also handle with hex hole can apply hex wrench to lock tighter. Simple dismantle the screw bar when worn.



Unit:mm

Order No.	Model	A	B	C	D	E	F	G	H	I	J	K	L	N.W.
52960-20	VSD20	156	48	52	25	27	25	0-63	34	M6	8	9.5	125	2.3kg
52960-25	VSD25	176	63	63	30	33	30	0-73	40	M6	10	11.5	147	4.0kg
52960-30	VSD30	190	73	73	35	38	35	0-76	45	M6	10	14	151	5.5kg
52960-40	VSD40	255	98	82	40	42	40	0-120	50	M8	12	15	196	11.0kg
52960-50	VSD50	310	125	100	50	50	50	0-152	57	M8	14	18	231	18.3kg
52960-60	VSD60	325	150	100	50	50	50	0-165	60	M8	14	18	245	20.0kg
52960-80	VSD80	350	200	110	55	55	45	0-195	70	M10	16	19.5	281	34.5kg

TOOL MAKER VISE

52970

PGV

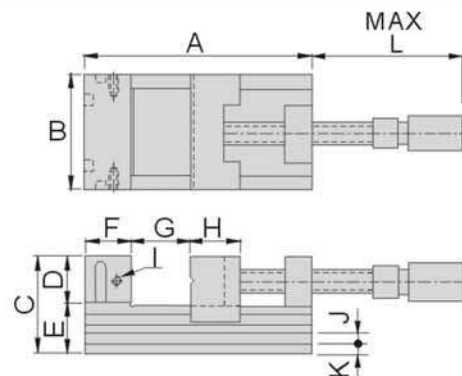
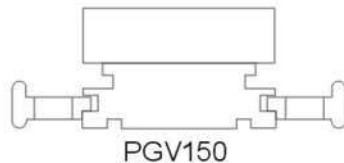
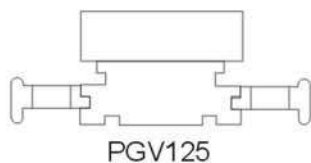
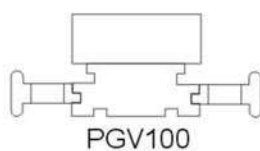
Precision Hydraulic Vice



Features :

- ▶ Adopting hydraulic structure with stronger clamping force.
- ▶ High precision and quality, popular in worldwide.

Material	Tool Steel
Hardness	HRC52°~58°
Max clamping force	1500kgf
Parallelism	within 0.005mm/100mm
Squareness	within 0.008mm/100mm



Unit:mm

Order No.	Model	A	B	C	D	E	F	G	H	I	J (WxD)	K	L	N.W.
52970-100	PGV100	220	100	80	40	40	40	110	50	M10	9x7	9.5	235	11.1kg
52970-125	PGV125	300	125	90	40	50	60	165	70	M10	11x7	12.5	290	20.6kg
52970-150	PGV150	340	150	95	45	50	60	210	70	M10	12x11	14	340	23.5kg

Wire EDM Extensions Clamp

53000 EW10 Wire EDM Clamp



Spec.: L80 x W22 x T8(M8)

Features :

- ▶ Suitable for using in WEDM machines.
- ▶ Adopting stainless steel with heat treatment, stable and distortion free.
- ▶ Based on the type of WEDM machines and workpiece applied, it can make various combinations.

Material	SUS440
Hardness	HRC45°~50°

53005 EW20 Wire EDM Clamp



Features :

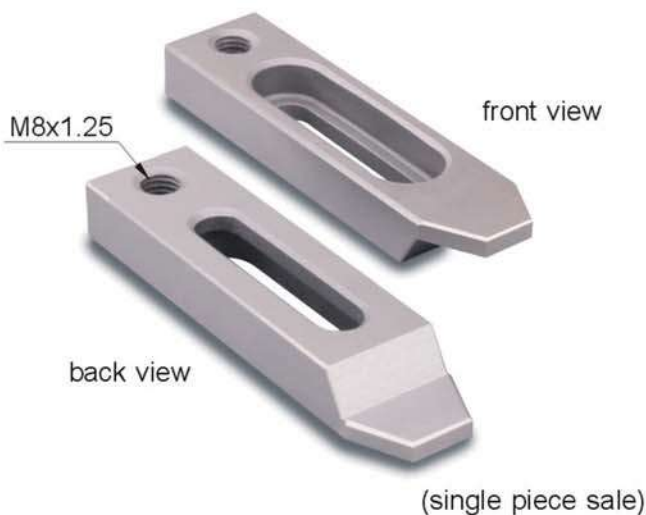
- ▶ Suitable for using in WEDM machines.
- ▶ Adopting stainless steel with heat treatment, stable and distortion free.
- ▶ Based on the type of WEDM machines and workpiece applied, it can make various combinations.

Material	SUS440
Hardness	HRC45°~50°

Unit:mm

Order No.	Model	Spec.	Mark	N.W.
53005-01	EW20-01	70x22x8	Ultra-thin	0.05kg
53005-02	EW20-02	70x22x12	Standard	0.10kg

53010 EW30 Wire EDM Clamp



Features :

- ▶ Suitable for using in WEDM machines.
- ▶ Adopting stainless steel with heat treatment, stable and distortion free.
- ▶ Based on the type of WEDM machines and workpiece applied, it can make various combinations.

Material	SUS440
Hardness	HRC45°~50°

Unit:mm

Order No.	Model	Spec.	Mark	N.W.
53010-01	EW30-01	90x22x8	Ultra-thin	0.05kg
53010-02	EW30-02	90x22x12	Standard	0.10kg

53015 EW40 Wire EDM Extensions Fixed Block



Spec.: L50 x W20 x T5 (M6 x 3)

Features :

- ▶ Suitable for using in WEDM machines.
- ▶ Adopting stainless steel with heat treatment, stable and distortion free.
- ▶ Based on the type of WEDM machines and workpiece applied, it can make various combinations.

Material	SUS440
Hardness	HRC50°~55°

53020 EW50 Wire EDM Extensions Fixed Block



Spec.: L65 x W20 x T5 (M5 x 4)

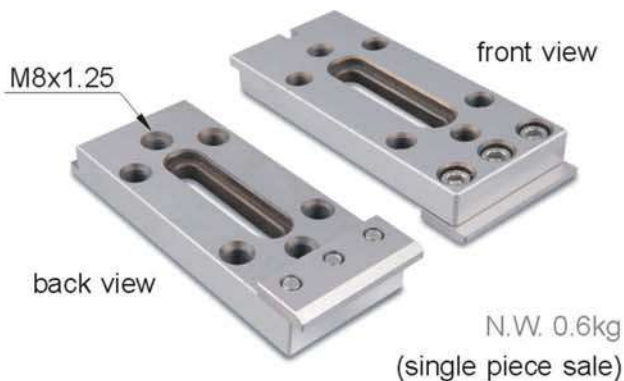
Features :

- ▶ Suitable for using in WEDM machines.
- ▶ Adopting stainless steel with heat treatment, stable and distortion free.
- ▶ Based on the type of WEDM machines and workpiece applied, it can make various combinations.

Material	SUS440
Hardness	HRC50°~55°

WIRE EDM EXTENSIONS CLAMP

53025 EW60 Wire EDM Extensions Clamp



Spec.: L120 x W50 x T15 + H5(M8)

Features :

- ▶ Suitable for using in WEDM machines.
- ▶ Adopting stainless steel with Sub-zero Treatment after Vacuum Heat Treatment, stable and distortion free.
- ▶ Based on the type of WEDM machines and workpiece applied, it can make various combinations.

Material	SUS440
Hardness	HRC50°~55°
Parallelism	within 0.003mm/100mm
Squareness	within 0.005mm/100mm

Wire EDM Extensions Clamp

53030

EW70

Wire EDM Extensions Clamp



Spec.: L120 x W100 x T15 + H5(M8)

Features :

- ▲ Suitable for using in WEDM machines.
- ▲ Adopting stainless steel with Sub-zero Treatment after Vacuum Heat Treatment, stable and distortion free.
- ▲ Based on the type of WEDM machines and workpiece applied, it can make various combinations.

Material	SUS440
Hardness	HRC50°~55°
Parallelism	within 0.003mm/100mm
Squareness	within 0.005mm/100mm

53035

EW80

Wire EDM Extensions Clamp



Spec.: L120 x W200 x T15 + H5(M8)

Features :

- ▲ Suitable for using in WEDM machines.
- ▲ Adopting stainless steel with Sub-zero Treatment after Vacuum Heat Treatment, stable and distortion free.
- ▲ Based on the type of WEDM machines and workpiece applied, it can make various combinations.

Material	SUS440
Hardness	HRC50°~55°
Parallelism	within 0.003mm/100mm
Squareness	within 0.005mm/100mm

53040

EW90

Wire EDM Extensions Clamp



(single piece sale)

Spec.: L220 x W60 x T20 + H5(M8)

Features :

- ▶ Suitable for using in WEDM machines.
- ▶ Adopting stainless steel with Sub-zero Treatment after Vacuum Heat Treatment, stable and distortion free.
- ▶ Based on the type of WEDM machines and workpiece applied, it can make various combinations.

Material	SUS440
Hardness	HRC50°~55°
Parallelism	within 0.003mm/100mm
Squareness	within 0.005mm/100mm

WIRE EDM EXTENSIONS CLAMP

53045

EW100

Wire EDM Extensions Clamp



(single piece sale)

Spec.: L120 x W65 x T15 + H5(M8)

Features :

- ▶ Suitable for using in WEDM machines.
- ▶ Adopting stainless steel with Sub-zero Treatment after Vacuum Heat Treatment, stable and distortion free.
- ▶ Based on the type of WEDM machines and workpiece applied, it can make various combinations.

Material	SUS440
Hardness	HRC50°~55°
Parallelism	within 0.003mm/100mm
Squareness	within 0.005mm/100mm

Wire EDM Extensions Clamp

53050

EWA

Wire EDM Extensions Clamp Kit



N.W. 6.6kg

Features :

- ▶ Suitable for using in WEDM machines.
- ▶ Adopting stainless steel with Sub-zero Treatment after Vacuum Heat Treatment, stable and distortion free.
- ▶ Based on the type of WEDM machines and workpiece applied, it can make various combinations.

Material	SUS440
Hardness	HRC45 ^o ~55 ^o
Parallelism	within 0.003mm/100mm
Squareness	within 0.005mm/100mm

Kits including

No.	Kits Model	Q'ty	Page
53000	EW10	2PCS	Refer to P. B17~20
53005-02	EW20-2	2PCS	
53010-02	EW30-2	2PCS	
53025	Ew60	3PCS	
53035	EW80	1PCS	

53055

EWB

Wire EDM Extensions Clamp Kit



N.W. 6.6kg

Features :

- ▶ Suitable for using in WEDM machines.
- ▶ Adopting stainless steel with Sub-zero Treatment after Vacuum Heat Treatment, stable and distortion free.
- ▶ Based on the type of WEDM machines and workpiece applied, it can make various combinations.

Material	SUS440
Hardness	HRC45 ^o ~55 ^o
Parallelism	within 0.003mm/100mm
Squareness	within 0.005mm/100mm

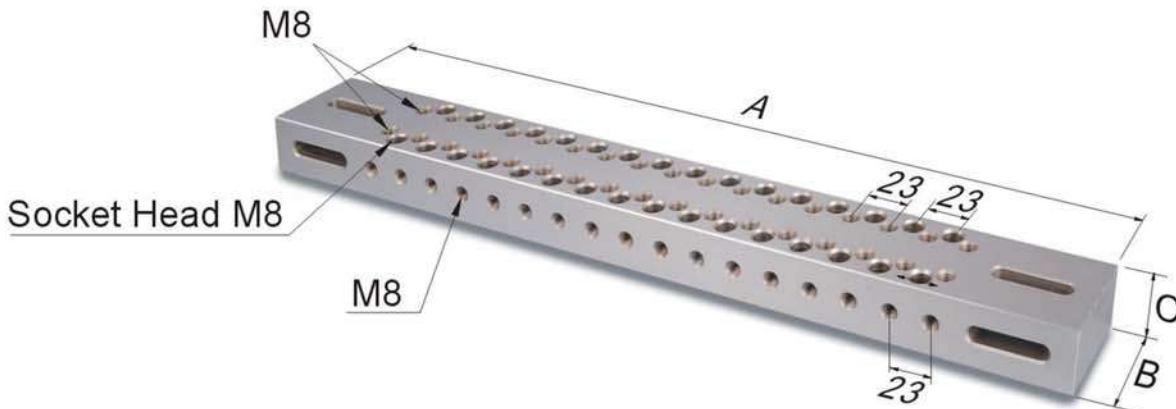
Kits including

No.	Kits Model	Q'ty	Page
53000	EW10	2PCS	Refer to P. B17~20
53005-02	EW20-2	2PCS	
53010-02	EW30-2	2PCS	
53045	EW100	6PCS	

53060

WPA

Wire EDM Ruler



Features :

- ▶ Suitable for large & heavy workpieces, application in Wire EDM machines.
- ▶ Adopting stainless steel with Sub-zero Treatment after Vacuum Heat Treatment, stable and distortion free.

Material	SUS440
Hardness	HRC50°~55°
Parallelism	within 0.003mm/100mm
Squareness	within 0.005mm/100mm

Unit:mm

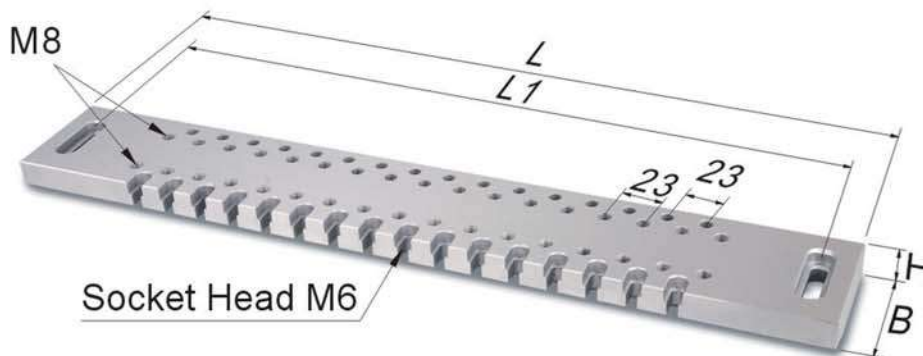
Order No.	Model	A	B	C	N.W.
53060-01	WPA-370	370	50	30	4.00kg
53060-02	WPA-450	450	50	30	5.00kg
53060-03	WPA-520	520	50	35	7.00kg
53060-04	WPA-550	550	60	35	9.00kg
53060-05	WPA-650	650	60	35	10.5kg

WIRE EDM EXTENSIONS CLAMP

53065

WPB

Wire EDM Ruler



Features :

- ▶ Suitable for large & heavy workpieces, application in Wire EDM machines.
- ▶ Adopting stainless steel with Sub-zero Treatment after Vacuum Heat Treatment, stable and distortion free.

Material	SUS440
Hardness	HRC50°~55°
Parallelism	within 0.003mm/100mm
Squareness	within 0.005mm/100mm

Unit:mm

Order No.	Model	L	L1	B	H	N.W.
53065-01	WPB-370	370	320	75	20	4.00kg
53065-02	WPB-480	480	430	75	20	5.20kg
53065-03	WPB-520	520	480	75	20	6.00kg
53065-04	WPB-550	550	500	90	22	8.20kg
53065-05	WPB-600	600	550	90	22	9.00kg
53065-06	WPB-650	650	600	90	22	10.0kg
53065-07	WPB-750	750	700	90	22	11.3kg

Wire EDM Extensions Clamp

53068

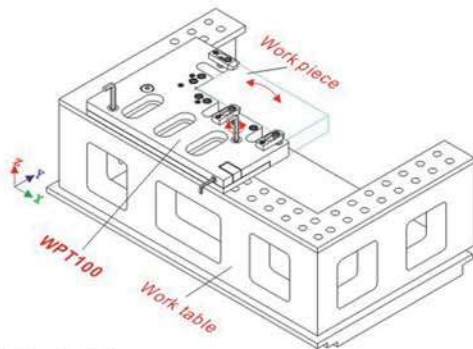
WPT100

Adjustable Fixture For EDM

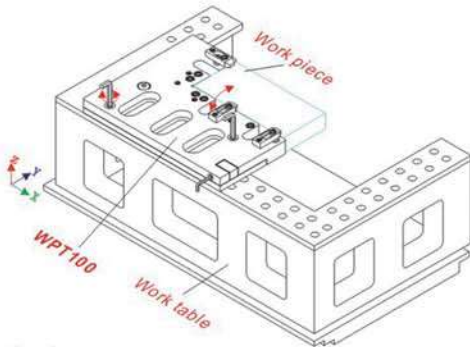


N.W. 6.8kg

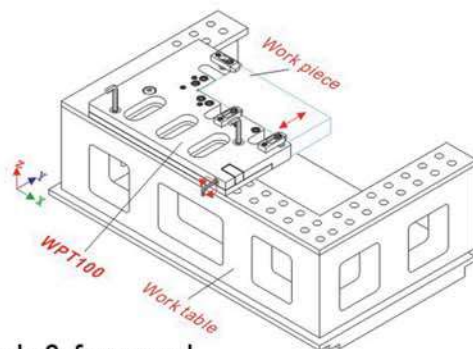
X,Y,Z axis fine-tuning illustration



1. left & right



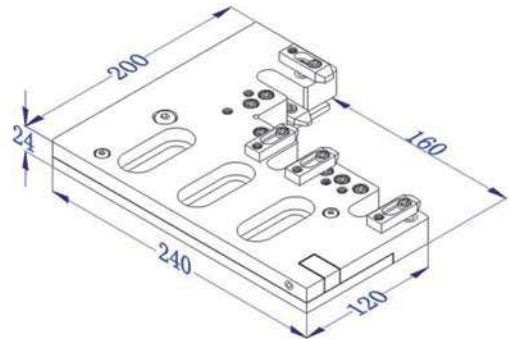
2. Up & down



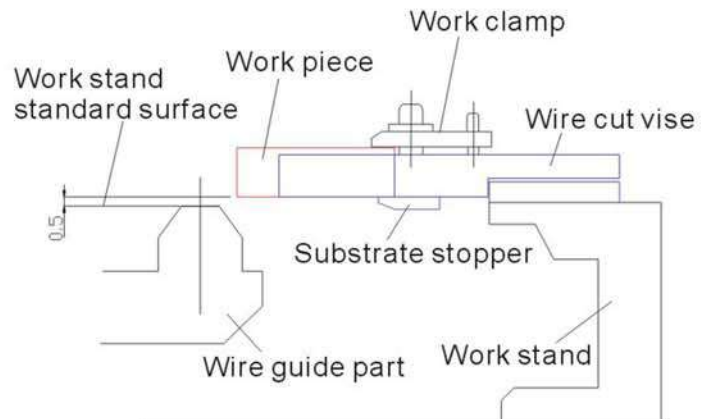
3. back & forward

Features :

- ▶ Adopting stainless steel (ASSAB-STAVAX) with Sub-zero Treatment after Vacuum Heat Treatment, stable and distortion free.
- ▶ With X, Y, and Z axis fine-tuning function.
- ▶ Hardness: HRC45°~ 55°
- ▶ Parallelism: within 0.003/100mm
- ▶ Squareness: within 0.005/100mm



Installation illustration



53070

WPT200

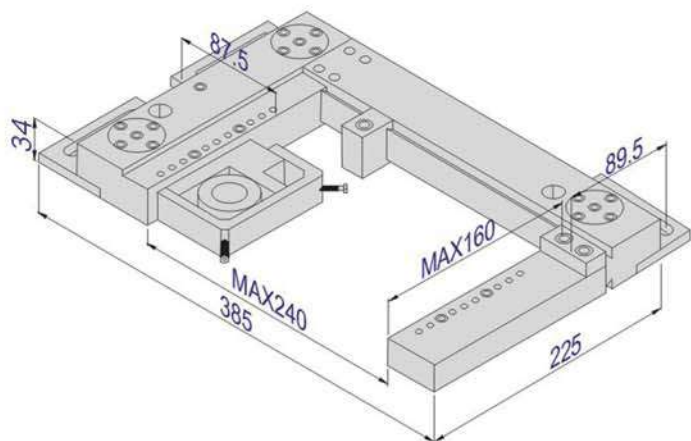
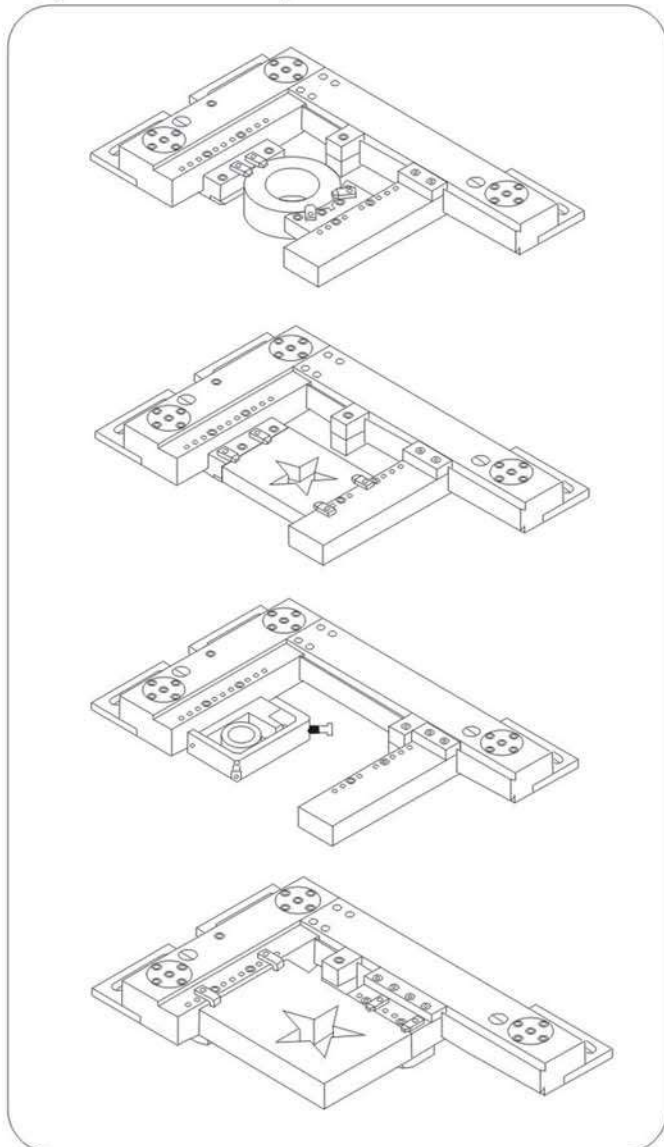
Levelling Adjustable Universal Fixture



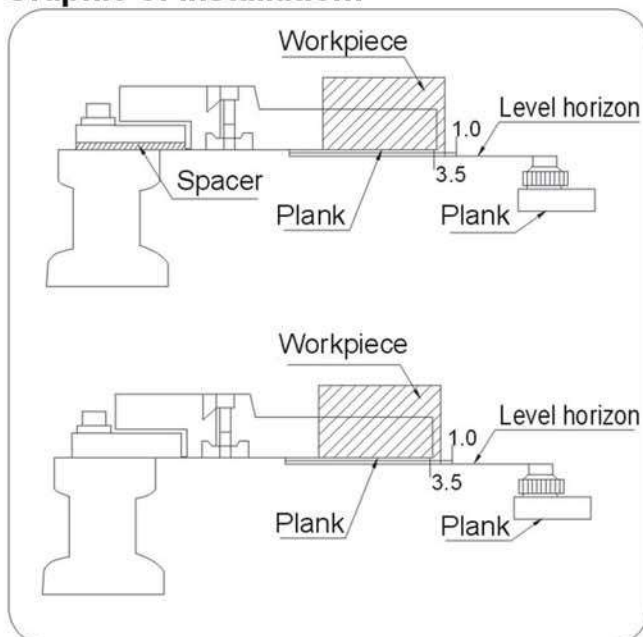
Features :

- ▶ Suitable for using in WEDM machines.
- ▶ Adopting stainless steel(ASSAB-STAVAX) with Sub-zero Treatment after Vacuum Heat Treatment, stable and distortion free.
- ▶ Suitable for large and heavy workpieces' application.

Application example:



Graphic of installation:



WIRE EDM EXTENSIONS CLAMP

Wire EDM Extensions Clamp

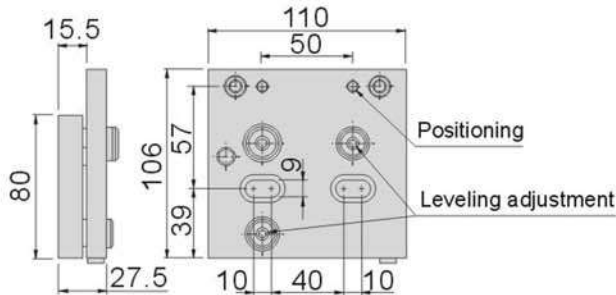
53100

WST001

Leveling Base



N.W. 1.8kg



Features :

- ▶ Suitable for using in WEDM machines and based on the processing needs, install with precision vise, V-block or parallel sets.
- ▶ Adopting high quality stainless steel (ASSAB-STAVAX) with Sub-zero Treatment after Vacuum Heat Treatment, stable and distortion free.
- ▶ Suitable for small, thin and round workpieces' application.
- ▶ 3-axis can be adjustable via applying hex wrench.

Hardness	HRC45 ^o ~55 ^o
Parallelism	within 0.003mm/100mm
Squareness	within 0.005mm/100mm

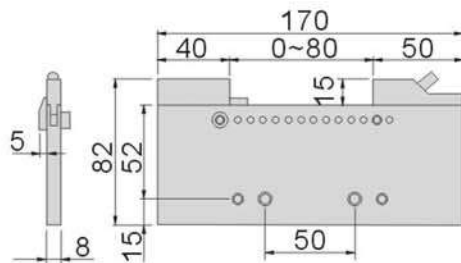
53105

WST080

Precision Wire EDM Vise



N.W. 0.8kg



Features :

- ▶ Adopting high quality stainless steel (ASSAB-STAVAX) with Sub-zero Treatment after Vacuum Heat Treatment, stable and distortion free.
- ▶ Can be installed with "Leveling base WST001", 3-axis can be adjustable via applying hex wrench.

Hardness	HRC45 ^o ~55 ^o
Parallelism	within 0.003mm/100mm
Squareness	within 0.005mm/100mm

Application example
with Leveling base

53100-05(WST001+WST080)



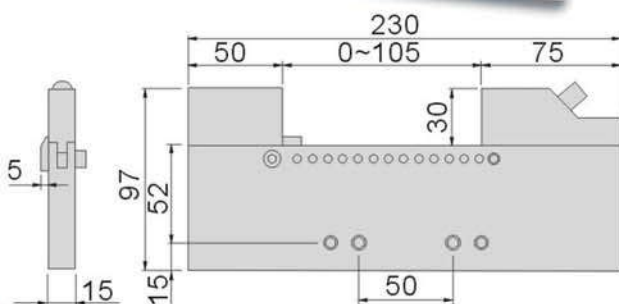
53110

WST100

Precision Wire EDM Vise



N.W. 2.0kg



Features :

- ▶ Adopting high quality stainless steel (ASSAB-STAVAX) with Sub-zero Treatment after Vacuum Heat Treatment, stable and distortion free.
- ▶ Can be installed with "Leveling base WST001", 3-axis can be adjustable via applying hex wrench.

Hardness	HRC45 ^o ~55 ^o
Parallelism	within 0.003mm/100mm
Squareness	within 0.005mm/100mm

Application example
with Leveling base

53100-10(WST001+WST100)



WIRE EDM
EXTENSIONS CLAMP

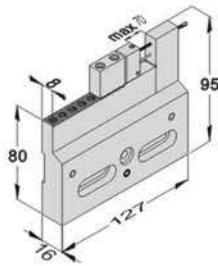
53112

WAV35

Wire EDM Vise



N.W. 1.08kg



Features :

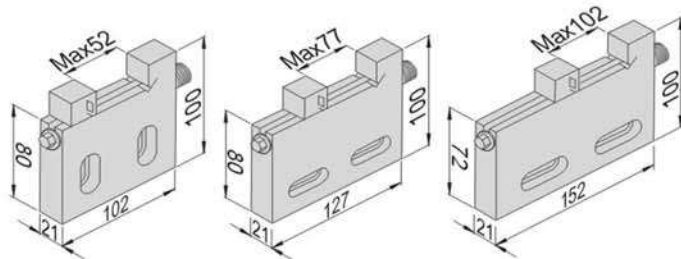
- ▶ Adopting high quality stainless steel (ASSAB-STAVAX) with Sub-zero Treatment after Vacuum Heat Treatment, stable and distortion free.
- ▶ With manual screw design, it is suitable for small workpieces' application.
- ▶ High precision thanks to the special structure design.

Hardness	HRC45°~55°
Parallelism	within 0.003mm/100mm
Squareness	within 0.005mm/100mm

53115

WAV

Wire EDM Vise



Features :

- ▶ Adopting high quality stainless steel(SUS440) with Sub-zero Treatment after Vacuum Heat Treatment, stable and distortion free.
- ▶ With manual screw design, it is suitable for small workpieces' application.
- ▶ High precision thanks to the special structure design.

Hardness	HRC45°~55°
Parallelism	within 0.003mm/100mm
Squareness	within 0.005mm/100mm

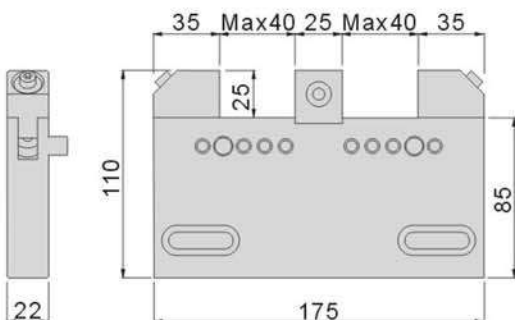
Unit:mm

Order No.	Model	Clamping range		N.W.
		Max.	Depth	
53115-01	WAV50	52	20	1.1kg
53115-02	WAV75	77	20	1.8kg
53115-03	WAV100	102	28	2.0kg

53120

WBV40

Wire EDM Vise



Features :

- ▶ Adopting high quality stainless steel (ASSAB-STAVAX) with Sub-zero Treatment after Vacuum Heat Treatment, stable and distortion free.
- ▶ Quick dismantle function with 2 workpieces can be clamped at the same time.
- ▶ Lean angle design for the jaws, stronger clamping force and no floating. High water pressure resistance.

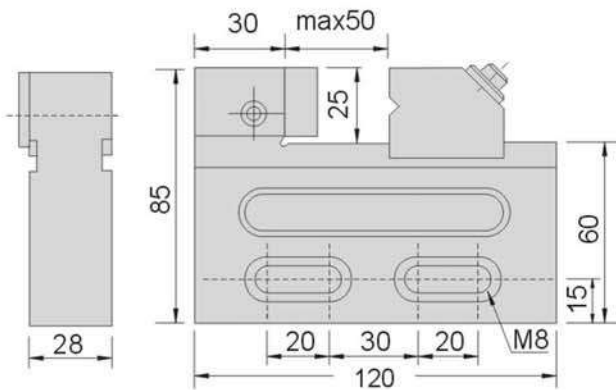
Hardness	HRC45°~55°
Parallelism	within 0.003mm/100mm
Squareness	within 0.005mm/100mm

Unit:mm

Clamping range			N.W.
Max.	Thickness	Depth	
40	22	25	2.8kg

Wire EDM Extensions Clamp

53125 WPV50 Stainless Precision Vise For EDM



Features :

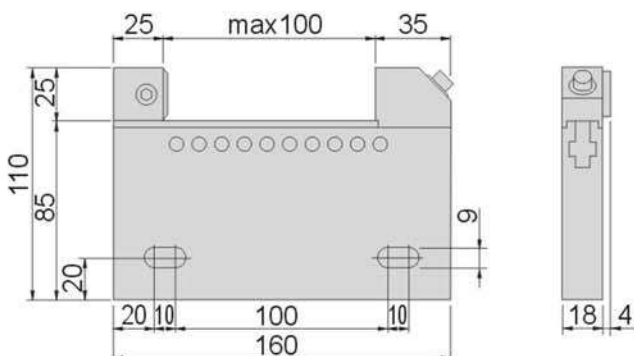
- ▶ Adopting high quality stainless steel(SUS420) with Sub-zero Treatment after Vacuum Heat Treatment, stable and distortion free.
- ▶ With 45° lock down design, workpiece anti-floating when clamp.

Hardness	HRC45°~55°
Parallelism	within 0.003mm/100mm
Squareness	within 0.005mm/100mm

Unit:mm

Clamping range			N.W.
Max.	Thickness	Depth	
50	28	25	1.4kg

53130 WPV90 Stainless Precision Vise For EDM



Features :

- ▶ Adopting high quality stainless steel (ASSAB-STAVAX) with Sub-zero Treatment after Vacuum Heat Treatment, stable and distortion free.
- ▶ Suitable for small and thin workpieces' application.
- ▶ With 45° lock down design, workpiece anti-floating when clamp.

Hardness	HRC45°~55°
Parallelism	within 0.003mm/100mm
Squareness	within 0.005mm/100mm

Unit:mm

Clamping range			N.W.
Max.	Thickness	Depth	
100	18	25	2.8kg

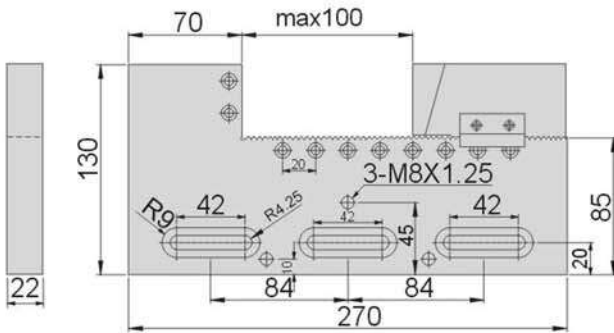
WIRE EDM EXTENSIONS CLAMP

53135
WPV100
Stainless Precision Vise For EDM


Features :

- ▶ Adopting high quality stainless steel (ASSAB STAVAX) with Sub-zero Treatment after Vacuum Heat Treatment, stable and distortion free.
- ▶ With 45° lock down design, workpiece anti-floating when clamp.

Hardness	HRC45°~55°
Parallelism	within 0.003mm/100mm
Squareness	within 0.005mm/100mm



Clamping range			N.W.
Max.	Thickness	Depth	
100	22	45	5.0kg

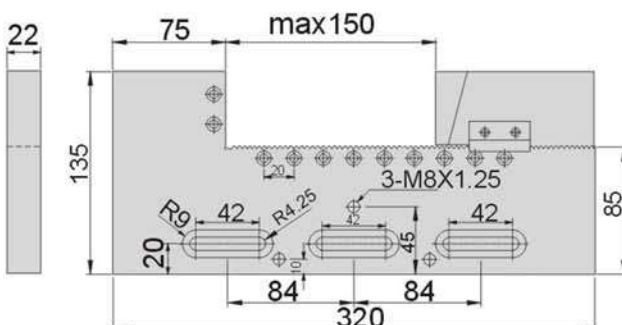
Unit:mm

**WIRE EDM
EXTENSIONS CLAMP**
53140
WPV150
Stainless Precision Vise For EDM


Features :

- ▶ Adopting high quality stainless steel (ASSAB STAVAX) with Sub-zero Treatment after Vacuum Heat Treatment, stable and distortion free.
- ▶ With 45° lock down design, workpiece anti-floating when clamp.

Hardness	HRC45°~55°
Parallelism	within 0.003mm/100mm
Squareness	within 0.005mm/100mm



Clamping range			N.W.
Max.	Thickness	Depth	
150	22	50	5.6kg

Unit:mm

Wire EDM Extensions Clamp

53145 WPV Stainless Precision Vise For EDM



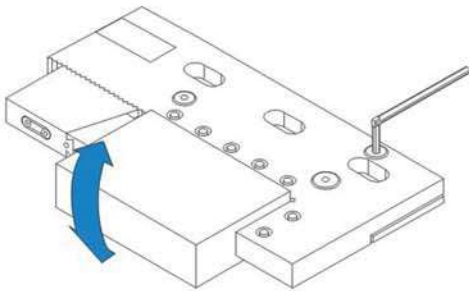
Features :

- ▶ Adopting high quality stainless steel (ASSAB STAVAX) with Sub-zero Treatment after Vacuum Heat Treatment, stable and distortion free.
- ▶ With 45° lock down design, workpiece anti-floating when clamp.
- ▶ 3-axis can be adjustable in this model.
- ▶ High water pressure resistance when clamping.

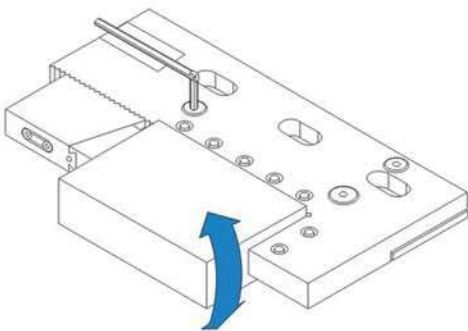
Hardness	HRC45°~55°
Parallelism	within 0.003mm/100mm
Squareness	within 0.005mm/100mm

WIRE EDM EXTENSIONS CLAMP

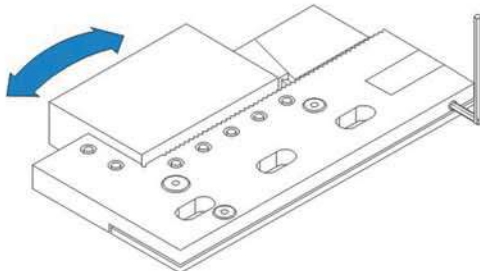
Leveling adjustment



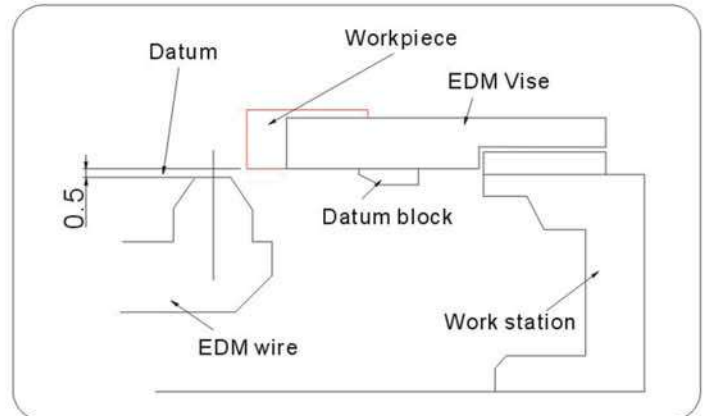
Leveling adjustment



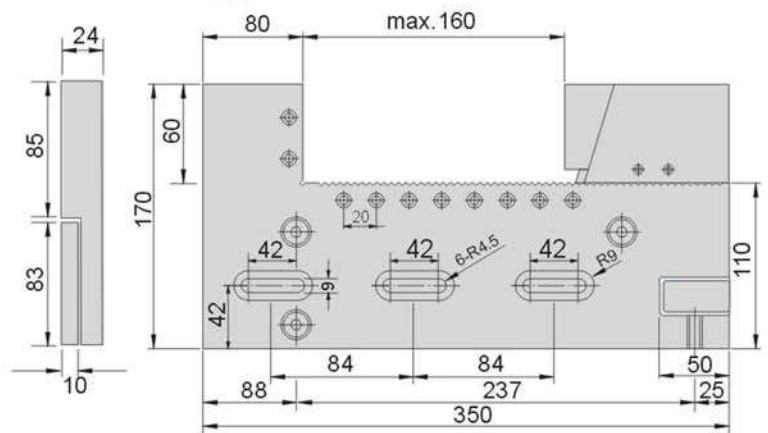
Parallel adjustment



Graphic of installation



WPV320 spec



Unit:mm

Order No.	Model	Spec	Clamping range		N.W.
			Max.	Depth	
53145-01	WPV280	24x170x270	100	50	8.5kg
53145-02	WPV320	24x170x350	160	60	8.6kg

53148

WPV

Stainless Precision Vise For EDM

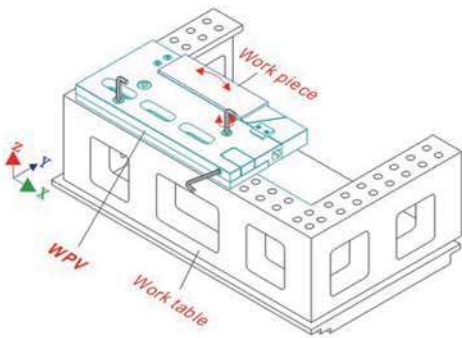


WPV300

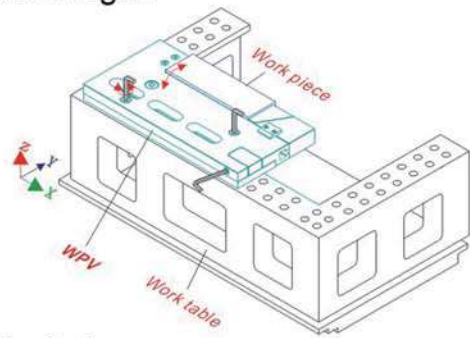


WPV240

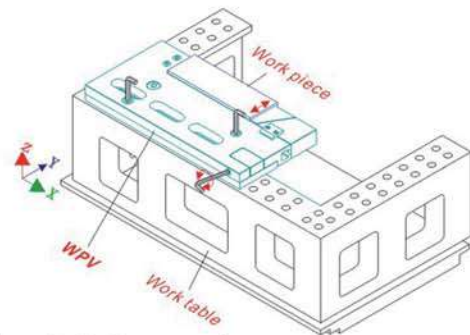
X, Y, Z axis fine-tuning illustration



1. left & right



2. Up & down



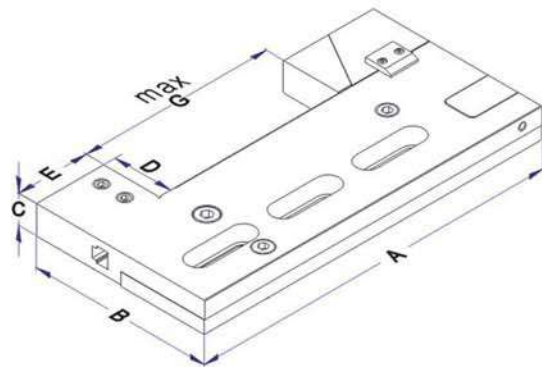
3. back & forward

Features :

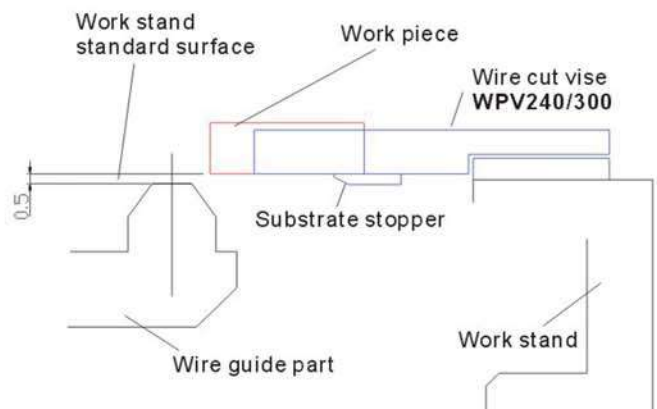
- ▶ Adopting stainless steel (ASSAB-STAVAX) with Sub-zero Treatment after Vacuum Heat Treatment, stable and distortion free.
- ▶ With X, Y, and Z axis fine-tuning function.

Material	SUS440
Hardness	HRC45°~55°
Parallelism	within 0.003mm/100mm
Squareness	within 0.005mm/100mm

WIRE EDM EXTENSIONS CLAMP



Installation illustration

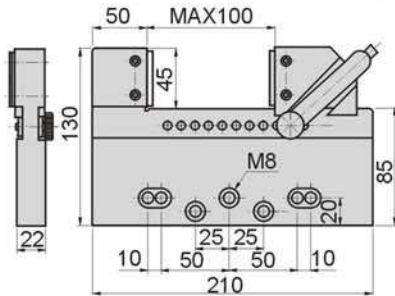
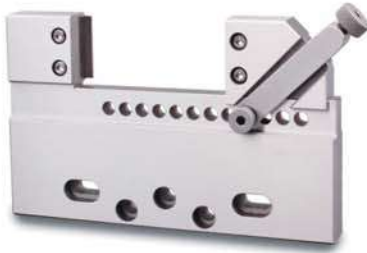


Unit:mm

Order No.	Model	A	B	C	D	E	G	N.W.
53148-01	WPV240	245	160	24	50	55	100	5.4kg
53148-02	WPV300	300	160	24	50	60	150	7.8kg

Wire EDM Extensions Clamp

53150 WEV100 Stainless Precision Vise For EDM



Features :

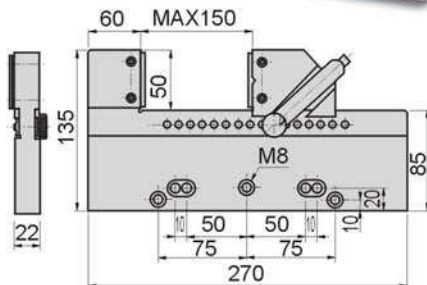
- ▶ Adopting high quality stainless steel (ASSAB STAVAX) with Sub-zero Treatment after Vacuum Heat Treatment, stable and distortion free.
- ▶ With 45° lock down design, workpiece anti-floating when clamp.

Hardness	HRC45°~55°
Parallelism	within 0.003mm/100mm
Squareness	within 0.005mm/100mm

Unit:mm

Clamping range			N.W.
Max.	Thickness	Depth	
100	22	45	3.0kg

53155 WEV150 Stainless Precision Vise For EDM



Features :

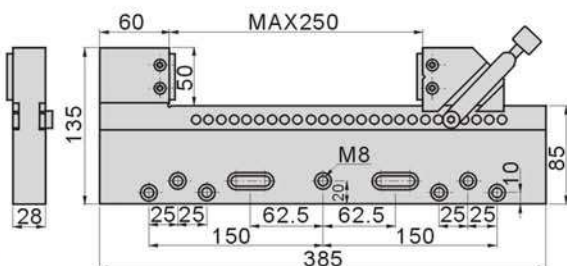
- ▶ Adopting high quality stainless steel (ASSAB STAVAX) with Sub-zero Treatment after Vacuum Heat Treatment, stable and distortion free.
- ▶ With 45° lock down design, workpiece anti-floating when clamp.

Hardness	HRC45°~55°
Parallelism	within 0.003mm/100mm
Squareness	within 0.005mm/100mm

Unit:mm

Clamping range			N.W.
Max.	Thickness	Depth	
150	22	50	4.0kg

53160 WEV250 Stainless Precision Vise For EDM



Features :

- ▶ Adopting high quality stainless steel (ASSAB STAVAX) with Sub-zero Treatment after Vacuum Heat Treatment, stable and distortion free.
- ▶ With 45° lock down design, workpiece anti-floating when clamp.

Hardness	HRC45°~55°
Parallelism	within 0.003mm/100mm
Squareness	within 0.005mm/100mm

Unit:mm

Clamping range			N.W.
Max.	Thickness	Depth	
250	28	50	5.5kg

WIRE EDM EXTENSIONS CLAMP

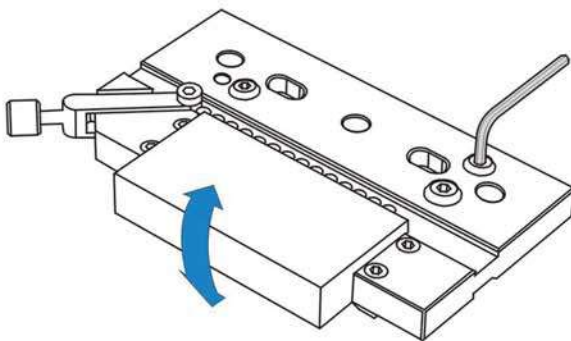
53165

WEV280

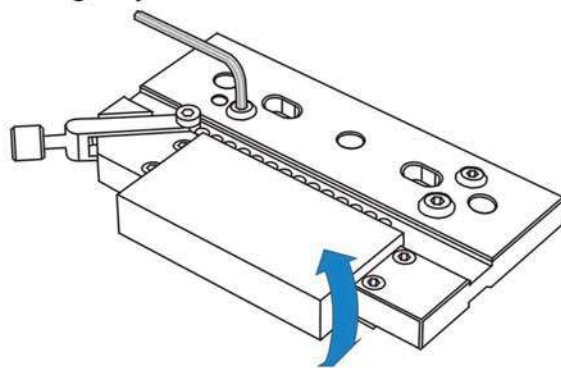
Stainless Precision Vise For EDM



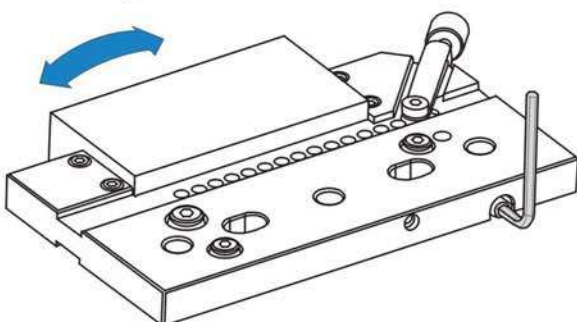
Leveling adjustment



Leveling adjustment



Parallel adjustment

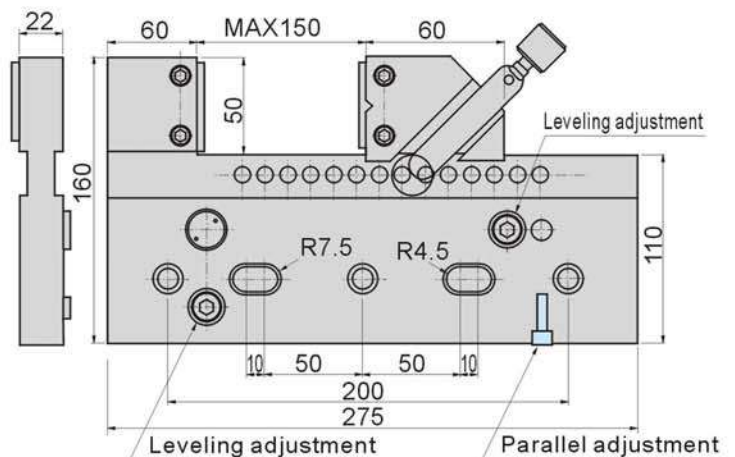


Features :

- ▶ Adopting high quality stainless steel (ASSAB STAVAX) with Sub-zero Treatment after Vacuum Heat Treatment, stable and distortion free.
- ▶ With 45° lock down design, workpiece anti-floating when clamp.
- ▶ 3-axis can be adjustable in this model.
- ▶ High water pressure resistance when clamping.

Hardness	HRC45°~55°
Parallelism	within 0.003mm/100mm
Squareness	within 0.005mm/100mm

WIRE EDM
EXTENSIONS CLAMP



Unit:mm

Clamping range			N.W.
Max.	Thickness	Depth	
150	22	50	5.5kg

Wire EDM Extensions Clamp

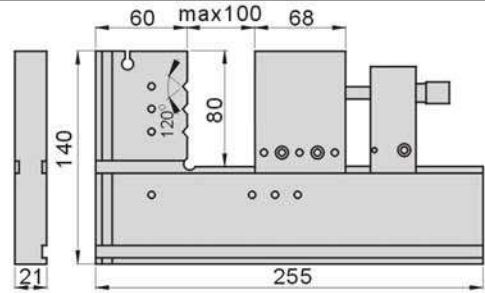
53168 WFV100 Stainless Precision Vise For EDM



Features :

- ▶ Adopting high quality stainless steel (SUS440) with Sub-zero Treatment after Vacuum Heat Treatment, stable and distortion free.
- ▶ With screw bar design, workpieces can be easily and rapidly clamped to any suitable sizes.

Hardness	HRC45°~55°
Parallelism	within 0.003mm/100mm
Squareness	within 0.005mm/100mm



WIRE EDM EXTENSIONS CLAMP

53170 WHV Stainless Precision Vise For EDM

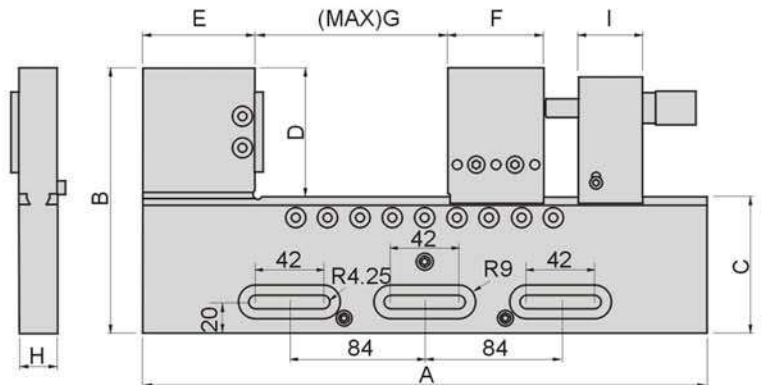
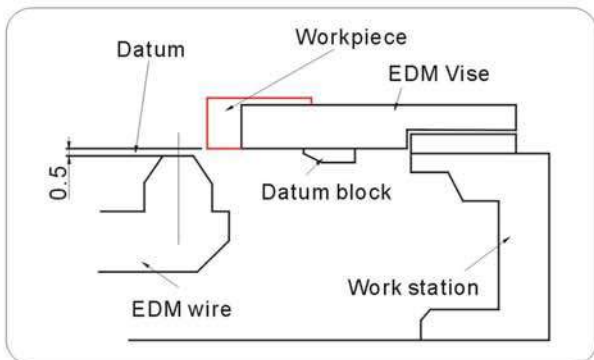


Features :

- ▶ Adopting high quality stainless steel (SUS440) with Sub-zero Treatment after Vacuum Heat Treatment, stable and distortion free.
- ▶ With screw bar design, workpieces can be easily and rapidly clamped to any suitable sizes.

Hardness	HRC45°~55°
Parallelism	within 0.003mm/100mm
Squareness	within 0.005mm/100mm

Graphic of installation



Unit:mm

Order No.	Model	A	B	C	D	E	F	G	H	I	N.W.
53170-01	WHV100	275	135	85	50	60	60	120	24	35	5.5kg
53170-02	WHV150	350	145	85	60	70	60	180	24	35	7.5kg

53175

WHV

Stainless Precision Vise For EDM

WHV260



Features :

- ▶ Adopting high quality stainless steel (SUS420) with Sub-zero Treatment after Vacuum Heat Treatment, stable and distortion free.
- ▶ With screw bar design, workpieces can be easily and rapidly clamped to any suitable sizes.

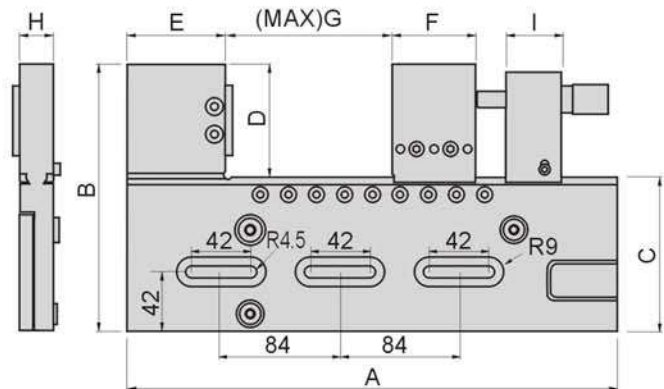
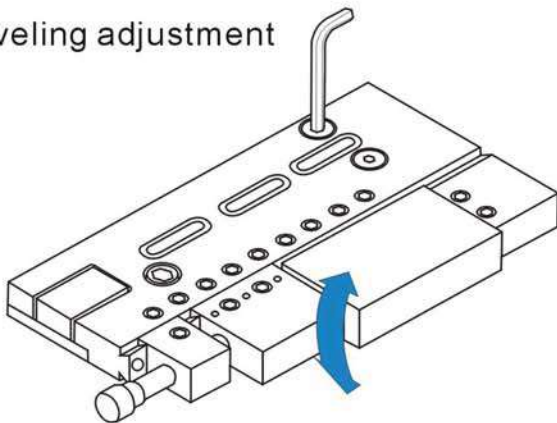
Hardness	HRC45°~55°
Parallelism	within 0.003mm/100mm
Squareness	within 0.005mm/100mm

WHV350



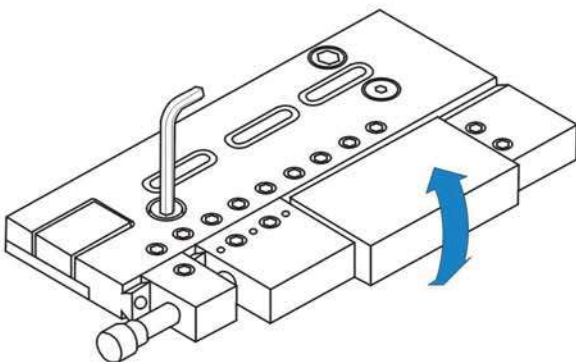
WIRE EDM EXTENSIONS CLAMP

Leveling adjustment

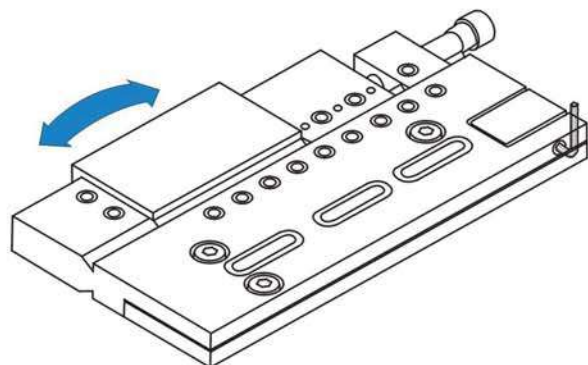


WHV350

Leveling adjustment



Parallel adjustment



Unit:mm

Order No.	Model	A	B	C	D	E	F	G	H	I	N.W.
53175-01	WHV260	275	160	110	50	60	60	120	24	35	7.0kg
53175-02	WHV350	350	170	110	60	70	60	180	24	35	9.0kg

Wire EDM Extensions Clamp

53180

WCV280

Stainless Precision Vise For EDM

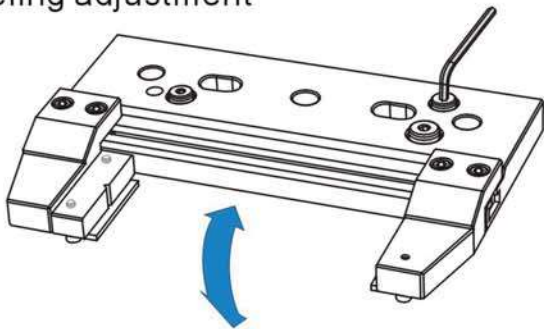


Features :

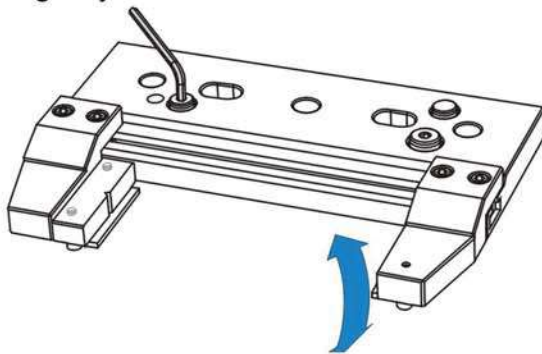
- ▶ Adopting high quality stainless steel (ASSAB STAVAX) with Sub-zero Treatment after Vacuum Heat Treatment, stable and distortion free.
- ▶ With 45°aw design, workpiece anti-floating when clamp.
- ▶ Adopting ball bearings and make 3-axis adjustment much more efficient.
- ▶ High water pressure resistance when clamping.

Hardness	HRC45°~55°
Parallelism	within 0.003mm/100mm
Squareness	within 0.005mm/100mm

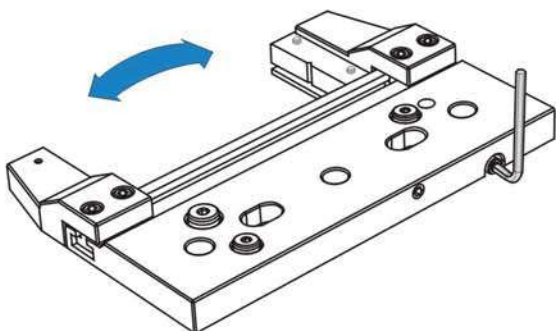
Leveling adjustment



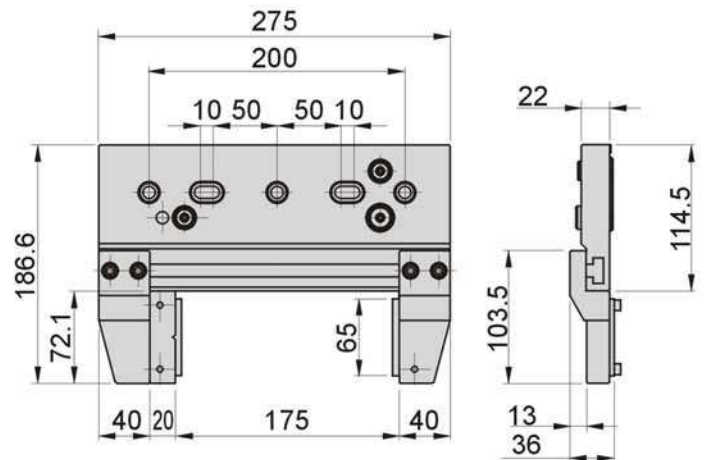
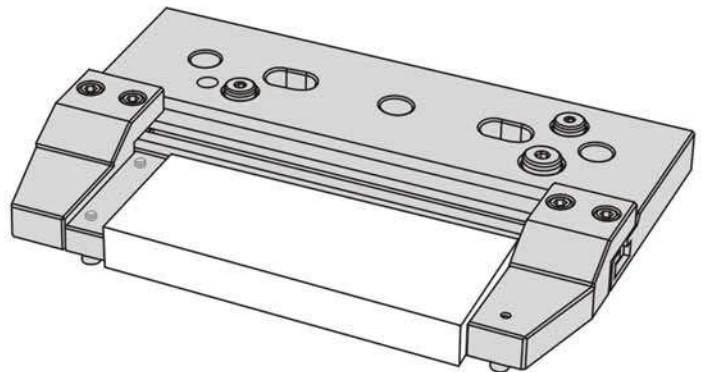
Leveling adjustment



Parallel adjustment



Application example



Unit:mm

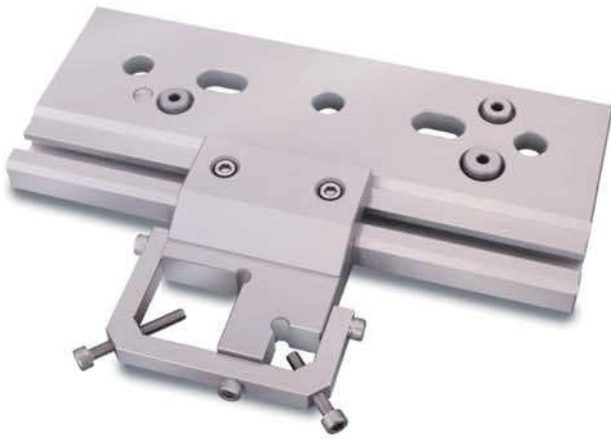
Clamping range			N.W.
Max.	Thickness	Depth	
175	22	72.1	6kg

WIRE EDM EXTENSIONS CLAMP

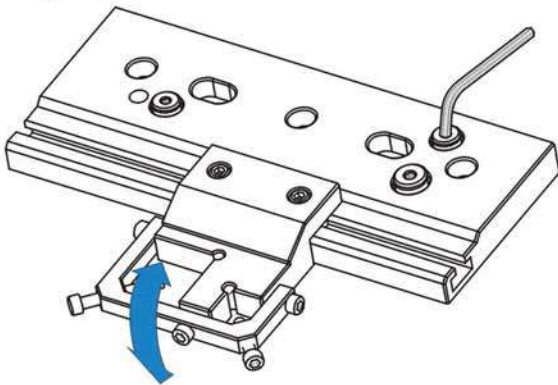
53185

WDV280

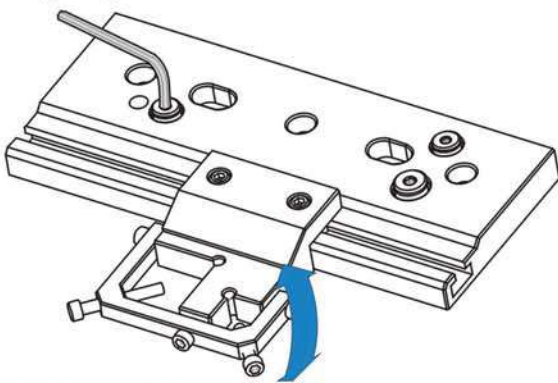
Stainless Precision Vise For EDM



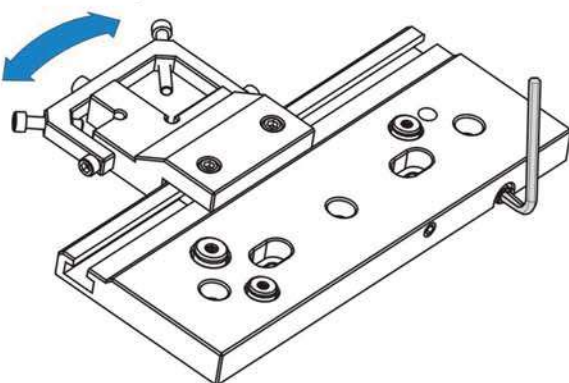
Leveling adjustment



Leveling adjustment



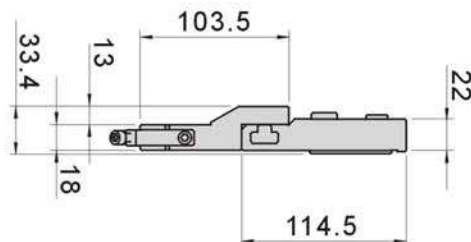
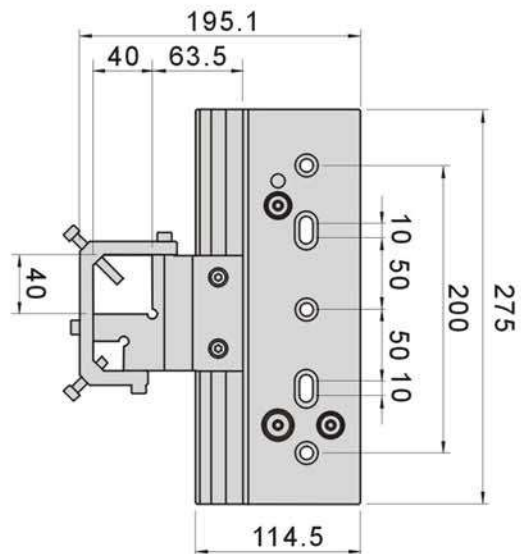
Parallel adjustment



Features :

- ▶ Adopting high quality stainless steel (ASSAB STAVAX) with Sub-zero Treatment after Vacuum Heat Treatment, stable and distortion free.
- ▶ With 45° Jaw design, workpiece anti-floating when clamp.
- ▶ Adopting ball bearings and make 3-axis adjustment much more efficient.
- ▶ High water pressure resistance when clamping.
- ▶ Clamping range for round workpiece: $\varnothing 3 \sim \varnothing 38$ mm
- ▶ In small V groove: $\varnothing 3 \sim \varnothing 20$ mm
- ▶ In large V groove: $\varnothing 10 \sim \varnothing 38$ mm

Hardness	HRC45°~55°
Parallelism	within 0.003mm/100mm
Squareness	within 0.005mm/100mm



WIRE EDM
EXTENSIONS CLAMP

Clamping range		Unit:mm
Small V groove	Large V groove	N.W.
$\varnothing 3 \sim \varnothing 20$	$\varnothing 10 \sim \varnothing 38$	5.7kg

Wire EDM Dividing Device

53200 WPF Wire EDM Dividing Device



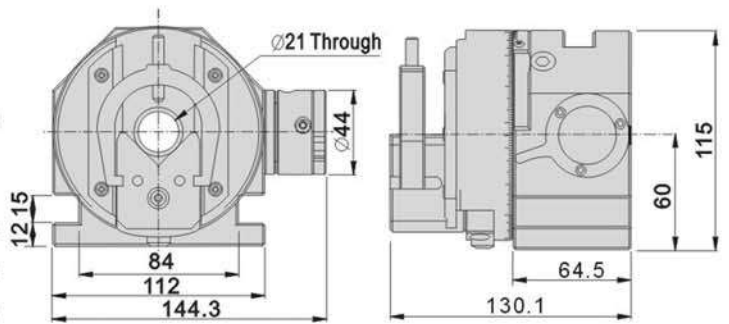
N.W. 9.6kg

Main parameters:

Center height	60 ± 0.5mm
V-block clamping	∅3~∅30mm
Travel of V-block	22mm
Indexer tooth q'ty & accuracy	24, 15° ± 5"
Through hole diameters	∅21mm
Rotational accuracy	0.003mm

Features :

- ▶ Adopting high quality stainless steel (ASSAB STAVAX) with Sub-zero Treatment after Vacuum Heat Treatment, stable and distortion free.
- ▶ High precision assembly and special seal up, waterproof and able to immerse into water.
- ▶ With dividing function, it is suitable for using in WEDM and Surface Grinding Machines.



WIRE EDM DIVIDING DEVICE

53210 EPF Wire EDM Dividing Device - Body only



N.W. 6.1kg

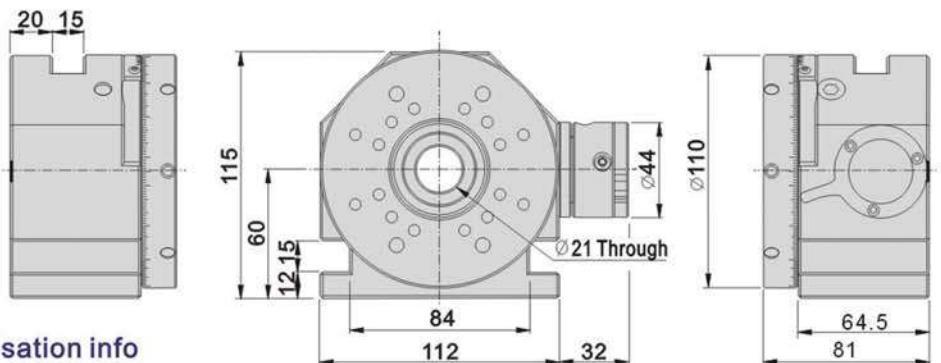
Features :

- ▶ Modulusation
- ▶ High rigidity, accuracy and stability
- ▶ Strong clamping force
- ▶ Various clamping size
- ▶ Flexible, fast and convenient
- ▶ Unique design with special surface treatment
- ▶ longer lifecycle

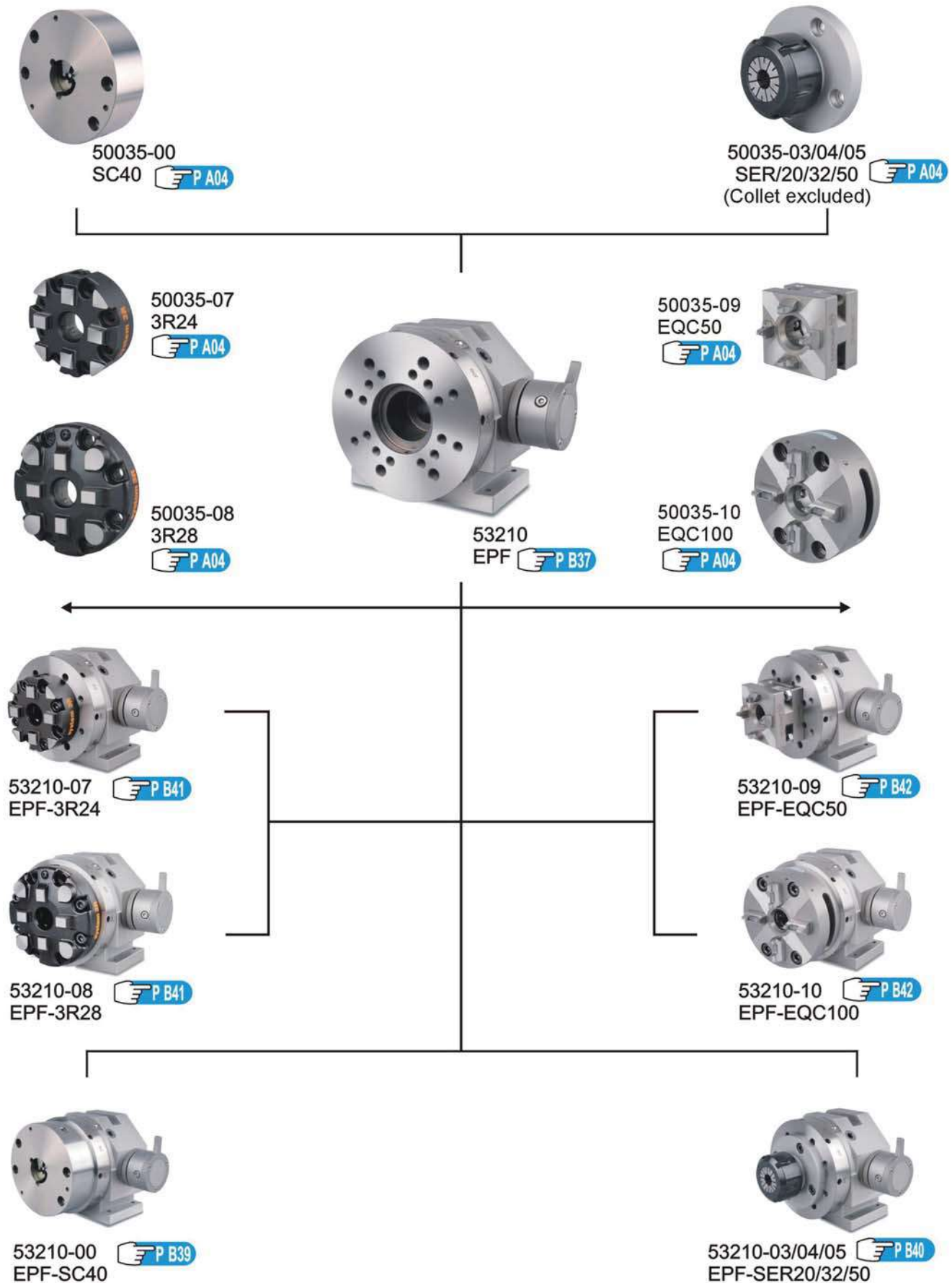
☆ See next page for more modulusation info

Features :

- ▶ EPF is adopting quality stainless steel with waterproof and stronger structure leading lasting durability.
- ▶ Adopting high precision double bearings in its structure to achieve higher accuracy, rigidity and stability.
- ▶ Thanks to modularisation design, depending on the job processing, customer can choose SC40 3-Jaw chuck, SER20/32/50 collet chuck, System 3R24, 3R28 and EROWA EQC50 & EQC100 and achieve cost effective. See next page for more info.



Modularisation Demo For EPF



WIRE EDM DIVIDING
DEVICE

Wire EDM Dividing Device

53210-00 EPF-SC40 Saper Precision 3-Jaws Wire EDM Dividing Device



N.W. 7.6kg

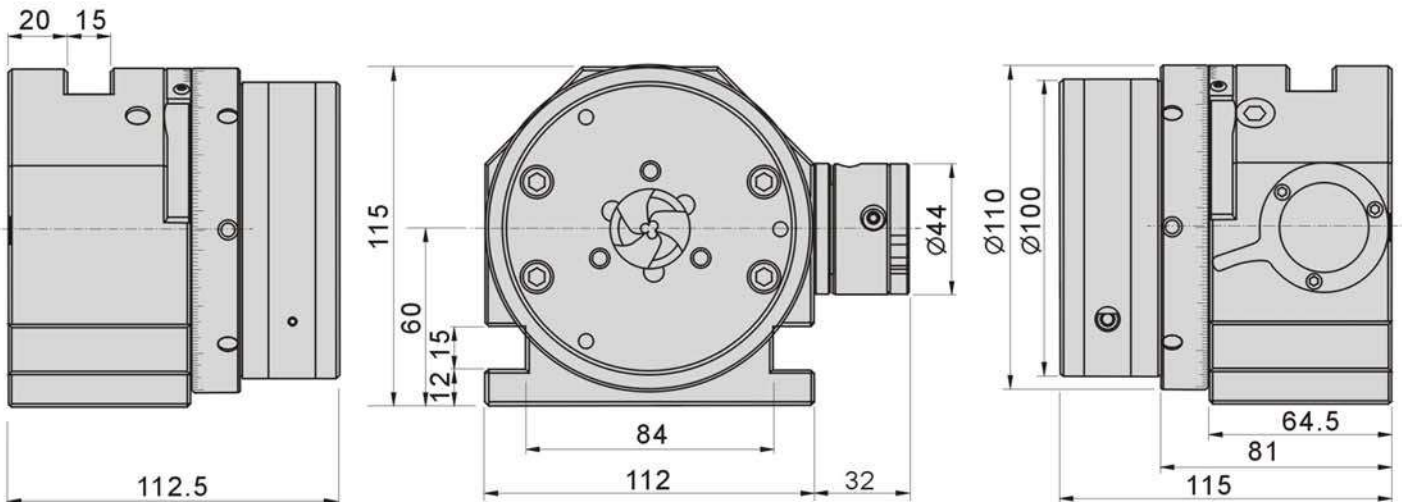
Note: Apply Torque Wrench at all time, due to SC40 3-Jaw Chuck has high precision structure design, avoiding any possible damage.

Features :

- ▶ EPF-SC40 is adopting quality stainless steel with waterproof and stronger structure leading lasting durability.
- ▶ Special designed SC40 3-Jaw Chuck provide rapid clamping and it suitable for mass production, workpiece with round shaped can precisely & rapidly clamped.
- ▶ Torque wrench is included for user-friendly purpose.
- ▶ Adopting high precision double bearings in its structure to achieve higher accuracy, rigidity and stability.

Main parameters:

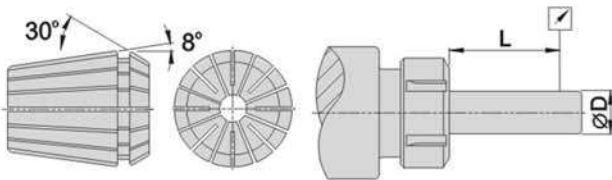
Center height	60 ± 0.5mm
Indexer tooth q'ty & accuracy	24, 15° ± 5"
Through hole diameters	Ø21mm
Min. clamping range	Ø1mm
Max. clamping range	Ø25mm
Rotational accuracy	0.003mm
Repeat accuracy	within 0.003mm



WIRE EDM DIVIDING DEVICE



Note: ER & ER Nut are not made of stainless steel.



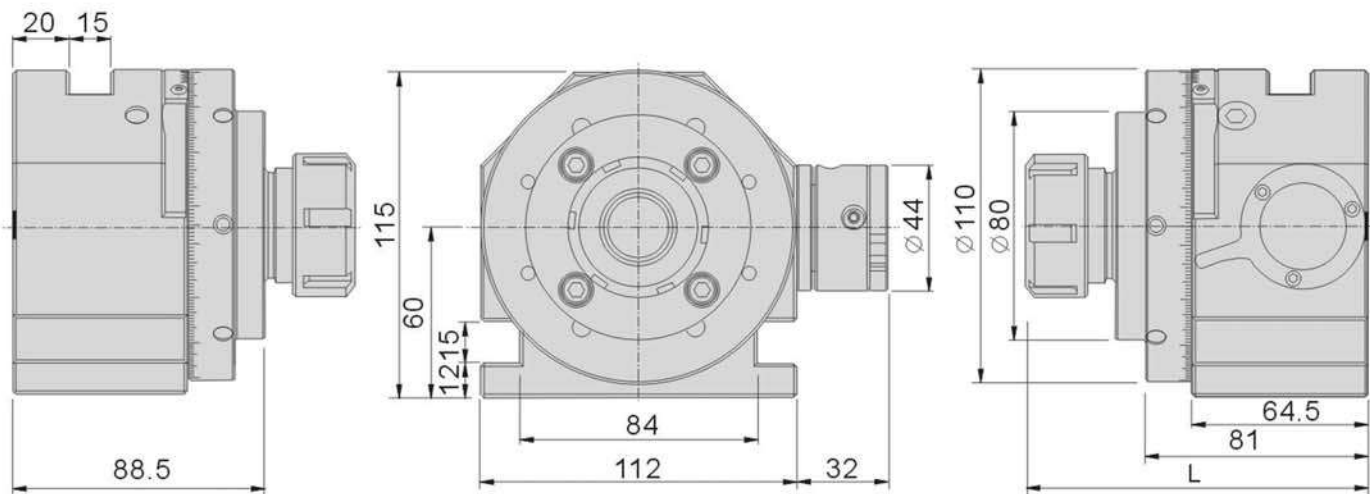
L	D	Accuracy
6	1.0-1.6	0.01
10	1.6-3.0	0.01
16	3.0-7.0	0.01
25	7.0-10.0	0.01
40	10.0-18.0	0.01
50	18.0-24.0	0.01
60	24.0-34.0	0.01

Features :

- ▶ EPF-SER is adopting high quality stainless steel with waterproof and
- ▶ stronger structure leading lasting durability.
- ▶ With ER collets, the flexible range of collet is 1mm.
- ▶ Capable collet clamping range: Min. \varnothing 2mm, Max. \varnothing 34mm
- ▶ It can rapidly clamp the workpiece and achieving higher stability during processing, no need to adjust the center accuracy.
- ▶ Adopting high precision double bearings in its structure to achieve higher accuracy, rigidity and stability.
- ▶ This model is compatible with various ER collets such as ER20, ER32, ER50 etc...

Main parameters:

Center height $60 \pm 0.5\text{mm}$
 Indexer tooth q'ty & accuracy..... $24, 15^\circ \pm 5''$
 Through hole diameters $\varnothing 21\text{mm}$
 Rotational accuracy 0.003mm



Order No.	Model	ER Collet spec.	L	N.W.
53210-03	EPF-SER20	3, 4, 6, 8, 10	120	6.9kg
53210-04	EPF-SER32	4, 8, 12, 16, 20	123.5	7.0kg
53210-05	EPF-SER50	12, 18, 20, 30, 34	139.5	7.3kg

Wire EDM Dividing Device

53210-07/08 **EPF-3R** **Wire EDM 3R Dividing Device**



EPF-3R24



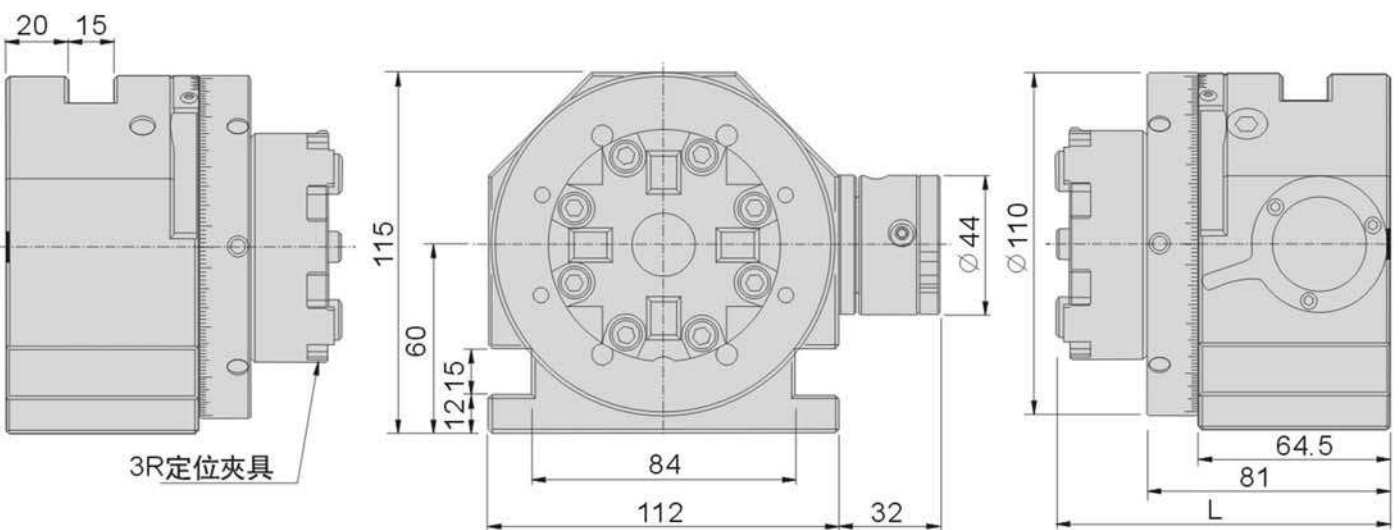
EPF-3R28

Features :

- ▶ EPF-3R is adopting quality stainless steel with waterproof and stronger structure leading lasting durability.
- ▶ With interchangeable design, components can be chosen according to users' demand.
- ▶ Adopting high precision double bearings in its structure to achieve higher accuracy, rigidity and stability.
- ▶ This model is applying Positioning Chuck of System 3R, it also works with EROWA Positioning Chuck to achieve modulisation.

Main parameters:

Center height	60 ± 0.5mm
Indexer tooth q'ty & accuracy	24, 15° ± 5"
Through hole diameters	∅21mm
Rotational accuracy	0.003mm
Repeat accuracy	0.003mm



3R定位夾具

Order No.	Model	Positioning Chuck spec	N.W.
53210-07	EPF-3R24	3R24	7.2kg
53210-08	EPF-3R28	3R28	7.3kg

WIRE EDM DIVIDING DEVICE


EPF-EQC50

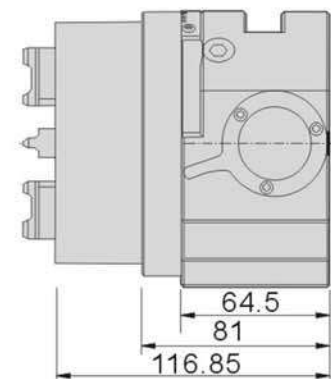
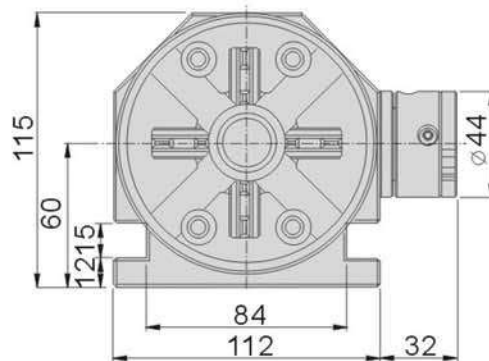
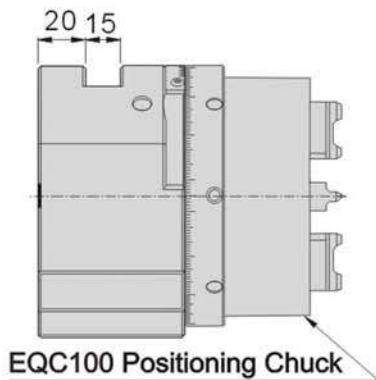
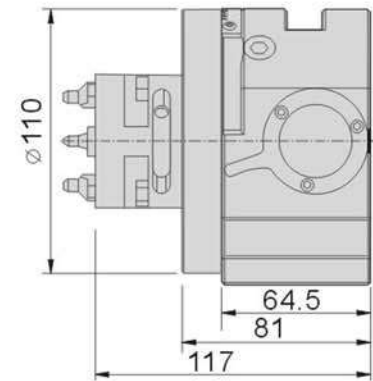
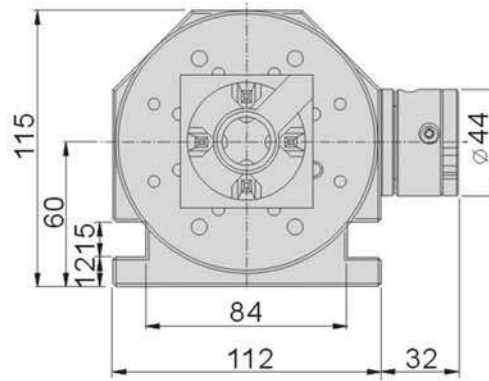
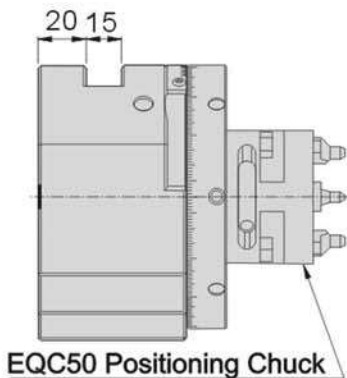
EPF-EQC100

Features :

- ▶ EPF-EQC is adopting quality stainless steel with waterproof and stronger structure stainless leading lasting durability.
- ▶ With interchangeable design, components can be chosen according to users' demand.
- ▶ Adopting high precision double bearings in its structure to achieve higher accuracy, rigidity and stability.
- ▶ This model is applying EROWA Positioning Chuck, It also works with System 3R Positioning Chuck to achieve modulisation.

Main parameters:

Center height	85 ± 0.5mm
Indexer tooth q'ty & accuracy	24, 15° ± 5"
Through hole diameters	∅21mm
Rotational accuracy	0.003mm
Repeat accuracy	0.003mm

WIRE EDM DIVIDING DEVICE


Order No.	Model	Positioning Chuck spec	N.W.
53210-09	EPF-EQC50	EQC50	6.7kg
53210-10	EPF-EQC100	EQC100	7.3kg

Electrode Vise

Material :SUS440

Parallelism:within 0.003mm/100mm

Hardness:HRC45°~55°

Squareness:within 0.005mm/100mm

Unit:mm

53300

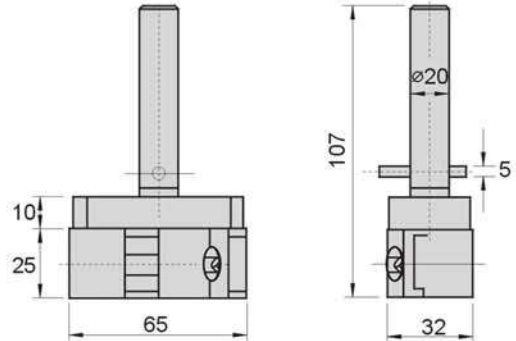
VH20



N.W. 0.5kg

Features :

- ▶ A delicate vise and suitable for clamping precision workpiece used in EDM Machine.



53310

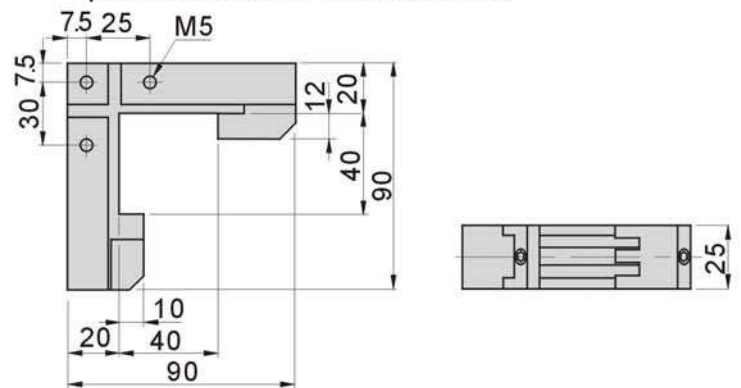
VW20



N.W. 0.8kg

Features :

- ▶ Two way clamping and suitable for small and precision work in EDM Machine.



53320

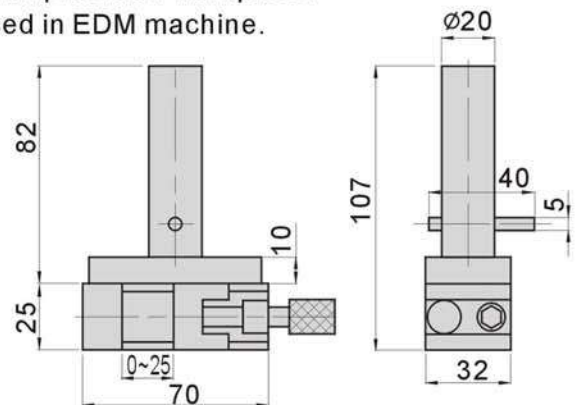
EVH20



N.W. 0.7kg

Features :

- ▶ Compact version precision vise, suitable for small precision workpiece.
- ▶ Used in EDM machine.



Material :SUS440 Parallelism:within 0.003mm/100mm
 Hardness:HRC45°~55° Squareness:within 0.005mm/100mm

Unit:mm

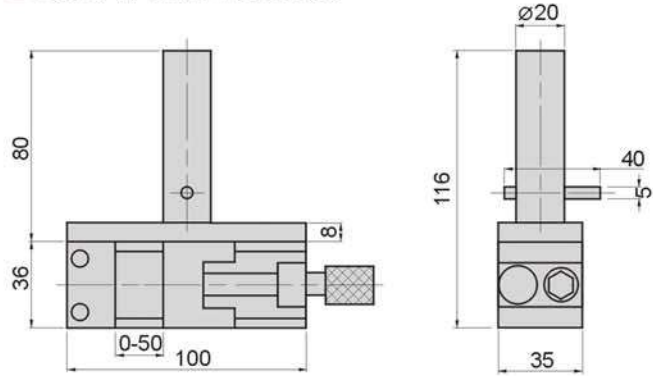
53330 EVH50



N.W. 1.1kg

Features :

- ▶ Compact version precision vise, suitable for small precision workpiece.
- ▶ Used in EDM machine.



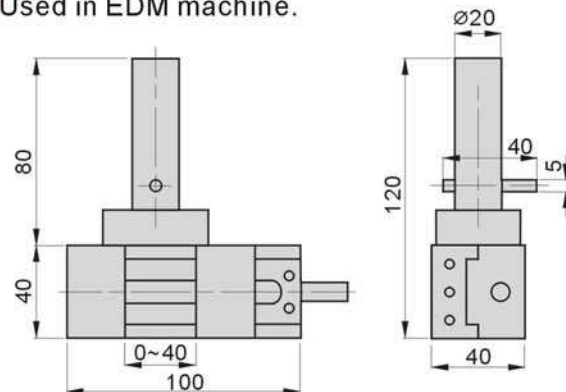
53340 EVR40



N.W. 1.2kg

Features :

- ▶ Compact version precision vise, suitable for small precision workpiece.
- ▶ Used in EDM machine.



Stainless Tool Maker Vise

53342

VLS

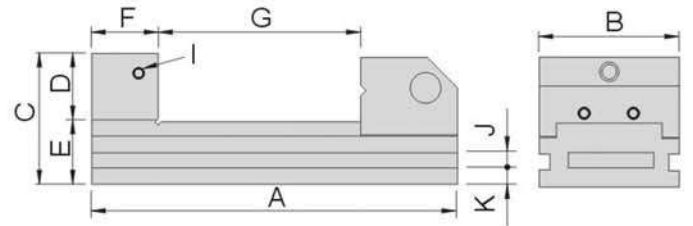
Stainless Tool Maker Vise



Material	SUS440
Hardness	HRC45°~55°
Parallelism	within 0.003mm/100mm
Squareness	within 0.005mm/100mm

Features :

- ▶ Suitable for EDM, milling, and precision grinding work.
- ▶ Different from VL series is VLS with anti-distortion structure



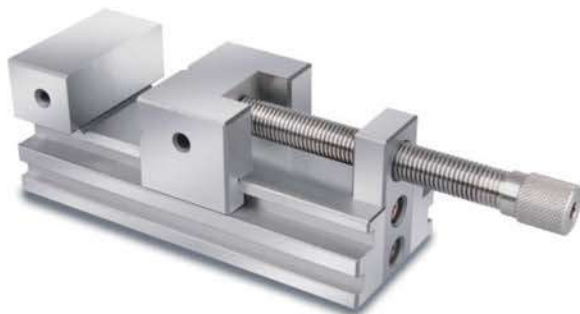
Unit:mm

Order No.	Model	A	B	C	D	E	F	G	I	J	K	N.W.
53342-01	VLS15	105	35	45	20	25	25	0~45	M6	6	7	1.0kg
53342-02	VLS20	150	48	50	25	25	25	0~75	M6	6	7	2.0kg
53342-03	VLS25	176	63	60	30	30	30	0~90	M6	8	7.5	3.3kg
53342-04	VLS30	190	73	70	35	35	35	0~100	M6	8	10	4.3kg
53342-05	VLS40	245	98	80	40	40	40	0~125	M6	10	12	9.8kg

53346

VHS

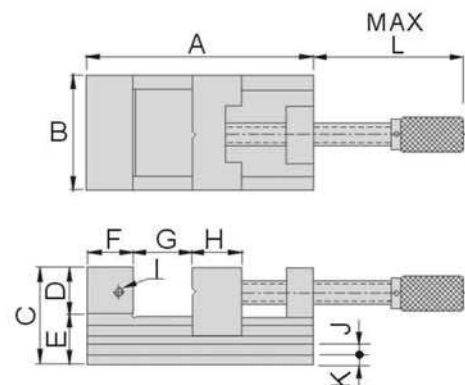
Stainless Tool Maker Vise



Material	SUS440
Hardness	HRC45°~55°
Parallelism	within 0.003mm/100mm
Squareness	within 0.005mm/100mm

Features :

- ▶ Suitable for EDM, milling, and precision grinding work.



Unit:mm

Order No.	Model	A	B	C	D	E	F	G	H	I	J	K	L	N.W.
53346-01	VHS20	140	48	55	25	30	25	0~70	40	M6	6	7	115	2.60kg
53346-02	VHS25	172	63	69	30	39	30	0~85	50	M6	8	9	129	4.80kg
53346-03	VHS30	190	73	78	35	43	35	0~100	50	M6	8	10	142	6.60kg
53346-04	VHS40	230	98	92	40	52	40	0~125	60	M8	10	12	171	13.0kg

Material :SUS440
 Hardness:HRC45°~55°

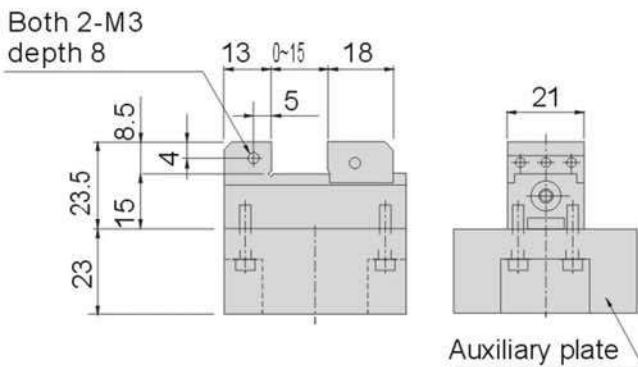
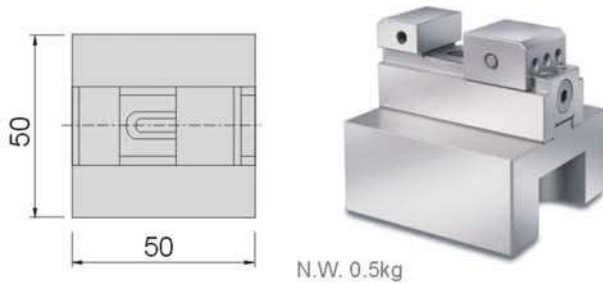
Parallelism:within 0.003mm/100mm
 Squareness:within 0.005mm/100mm



Unit:mm

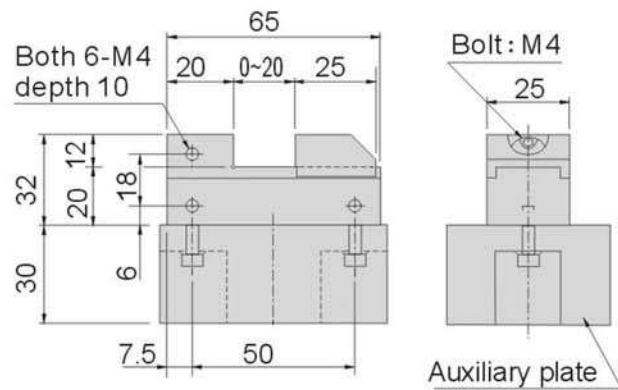
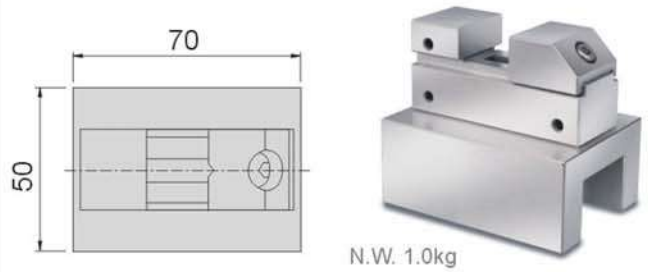
53350 EVJ10

It can be used with positioning plate of EROWA (ER-009214)and System 3R (3R-651.7E-P).



53360 EVL10

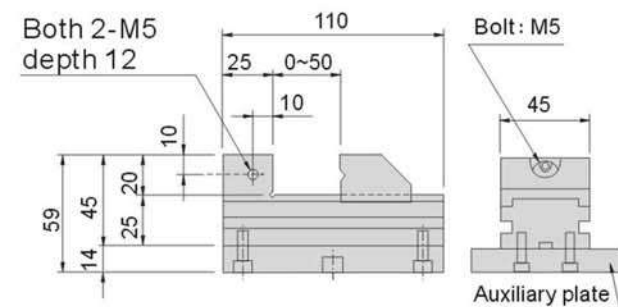
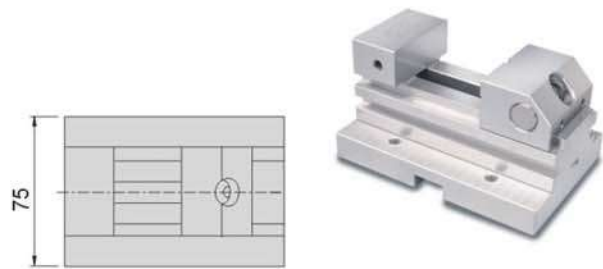
It can be used with positioning plate of EROWA (ER-009214)and System 3R (3R-651.7E-P).



ELECTRODE VISE

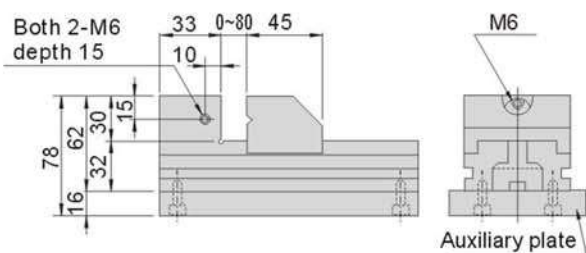
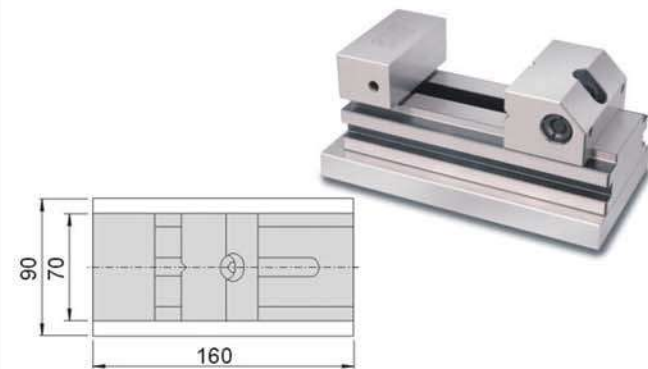
53370 ESV45

It can be used with positioning plate of EROWA (ER-009214)and System 3R (3R-651.7E-P).



53380 ESV70

It can be used with positioning plate of EROWA (ER-011599)and System 3R (3R-601.7E-P).



Electrode Vise

Material :SUS440

Parallelism:within 0.003mm/100mm

Hardness:HRC45°~55°

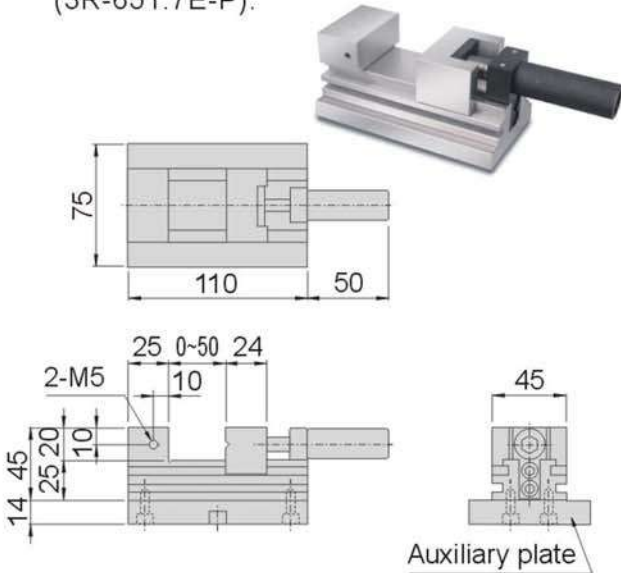
Squareness:within 0.005mm/100mm

Unit:mm

53390

EDSU60

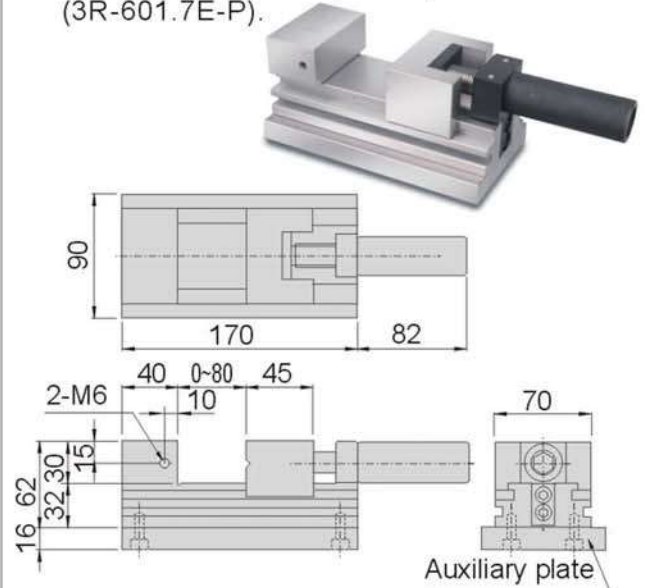
- It can be used with positioning plate of EROWA (ER-009214)and System 3R (3R-651.7E-P).



53400

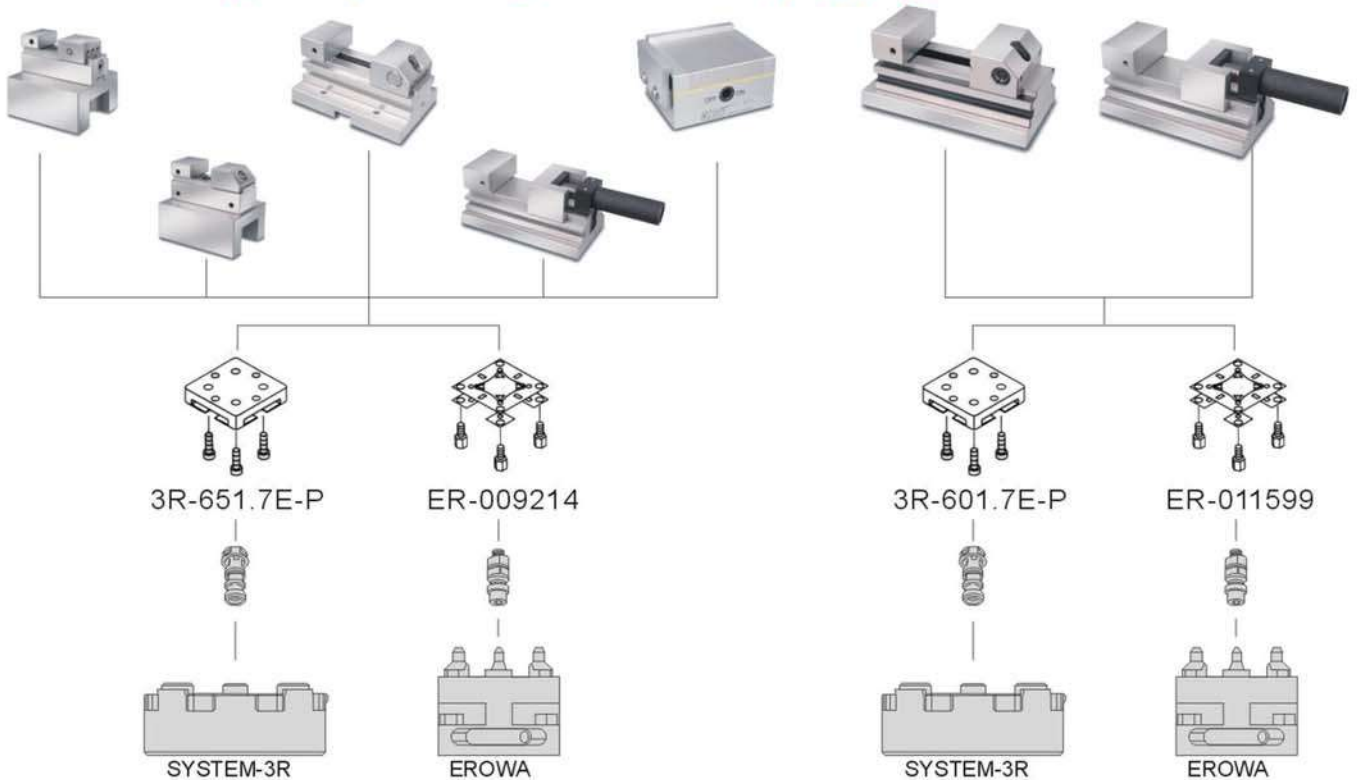
EDSU80

- It can be used with positioning plate of EROWA (ER-011599)and System 3R (3R-601.7E-P).



Breakthrough thinking of high precision systems for efficiency working environment.

Creating better processing environment by applying various modulisation.



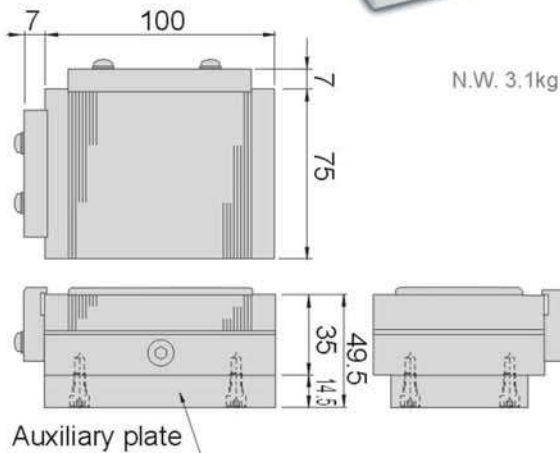
Features :

- Simple: It can be applied straight away after purchasing.
- Economic: More cost effective and easy to used in parallel.
- Compatibility: Same material applied with EROWA and System 3R.

ELECTRODE VISE

53410 EMC75

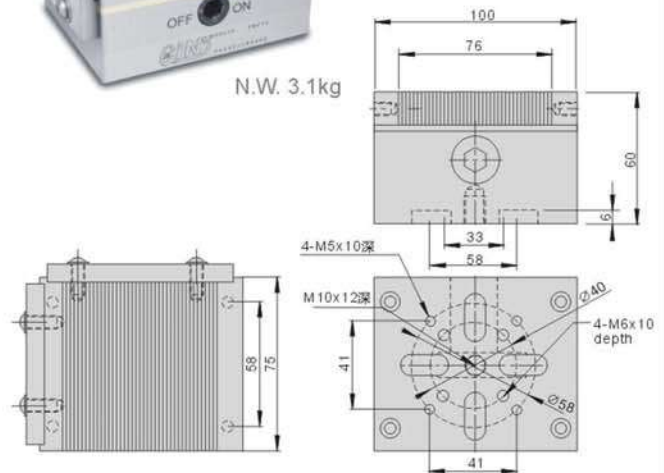
- It can be used with positioning plate of EROWA (ER-009214) and System 3R (3R-651.7E-P).


53412 SEMC75100

- It can be used with positioning plate of EROWA (ER-009214) and System 3R (3R-651.7E-P).

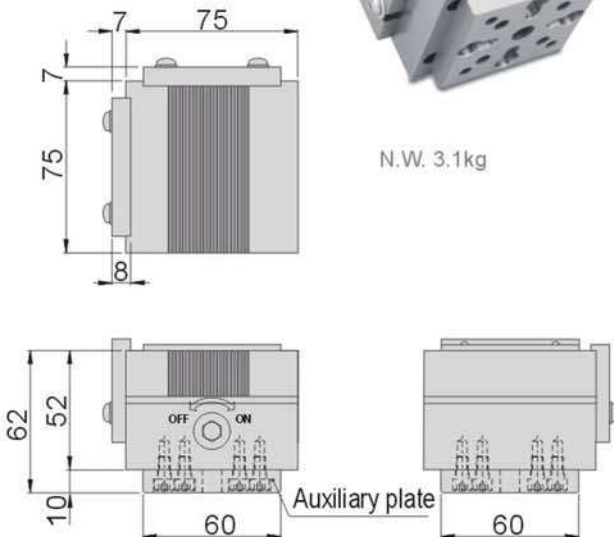


Stainless steel


 ELECTROD
MAGNETIC CHUCK

53420 EMC75S

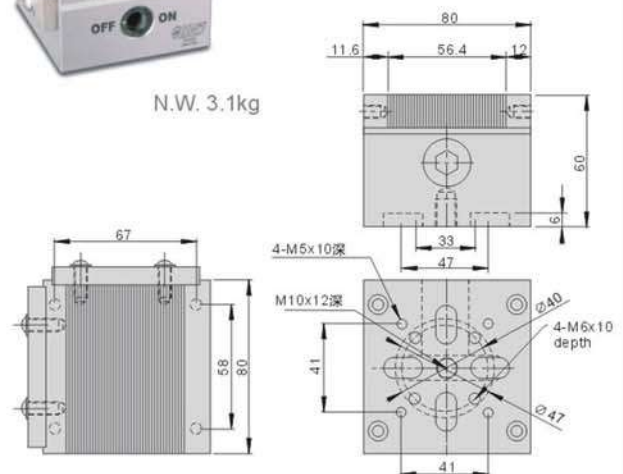
- It can be used with positioning plate of EROWA (ER-009214) and System 3R (3R-651.7E-P).


53422 SEMC8080

- It can be used with positioning plate of EROWA (ER-009214) and System 3R (3R-651.7E-P).

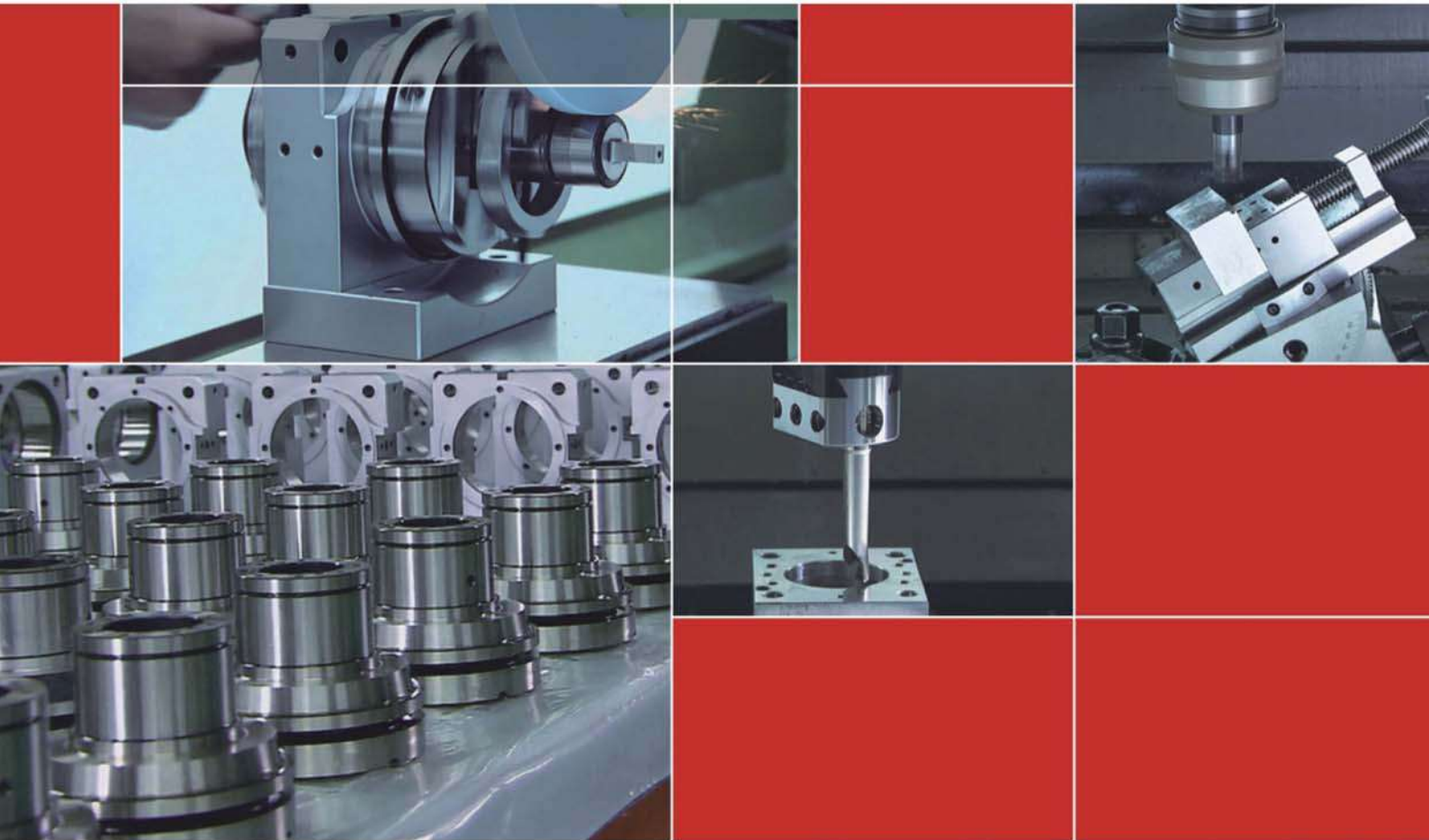


Stainless steel





Gin Tech Precision Co., Ltd. Copyrighted; All Rights Reserved



Gin Chan reserves right to amend the product content without prior notice

精展精密科技股份有限公司 (總公司) GIN TECH PRECISION CO.,LTD.

台灣238新北市樹林區保安街一段341巷7號
Address: No 7, Lane 341, Sec. 1, Bau An Street, Shu lin Dist.,
23841, New Taipei City, Taiwan
TEL: 886-2-2681-8596 (Rep.)  Sales@ginchan.com.tw
FAX: 886-2-2681-8516  www.ginchan.com.tw

大陸總經銷 東莞美商精展機械五金有限公司 東莞市精展機械五金有限公司 GIN CHAN MACHINERY & HARDWARE CO.,LTD.(DONGGUAN)

廣東省東莞市大朗鎮石廈村金沙崗二路27號
Tel: 86-769-8318-5858 (Rep.)
Fax: 86-769-8318-5838/8313-5003
 www.ginchan.com.cn  sales@ginchan.com.cn



Scan Now!

